



التراث انترناشيونال

**Altorath International**

للإستشارات الهندسية ذ.م.م. Engineering Consultants L.L.C





# content

5	Introduction
7	Chairman's Message
8	Vision, Mission & Values
10	Organization Structure
11	Why Altorath?
12	Approach
13	Services
18	Clients
19	Technology
20	Offices
21	Office Contacts
22	Awards
24	Our People
25	Projects
128	AAG



“ Since the formation in 1989, Altorath International Engineering Consultants L.L.C. have become one of the largest and most respected providers of architectural, engineering design and project management services in the GCC region. ”



## Introduction

Since the formation in 1989 Altorath International Engineering Consultants L.L.C. (AIC) have become one of the largest and most respected providers of architectural, engineering design and project management services in the GCC region.

As of today we have +800 team members in 13 offices across the GCC region. We are a recognized industry leader in our specialist fields and pride ourselves in being a 100% UAE National Company.

In pursuit of excellence AIC delivers a fully integrated range of professional services that combine to make a real difference to our clients and the communities in which we work.

AIC is organised to encourage the creative process, to cross-pollinate ideas and talents across offices and deliver quality at all levels, in all places. Our passionate pursuit of excellence, the application of our creativity to solve our clients' challenges, our technical expertise and our collaborative spirit are measures of our success.

Each of us is charged with nurturing the firm's next generation by demonstrating excellence.

AIC has created a culture that embraces diversity, inspires innovation with a purpose to create, enhance and sustain the world's built, natural and social environments.





“ Our focus is based on client satisfaction together with, creating innovative and sustainable solutions. This approach results in continued long-term client collaborations that form the cornerstone of the company. ”





## Chairman's Message

We continue to make great strides towards meeting our strategic goals and objectives in the pursuit of adding value to our services and markets.

Our focus is based on client satisfaction together with, creating innovative and sustainable solutions. This approach results in continued long-term client collaborations that form the cornerstone of the company.

Our employees apply and promote our core values of Client Focus, Excellence, Teamwork, Diversity, Innovation and Ethics, as we offer our clients over two decades of practical industry experience in our commitment to deliver high-quality services.


The success of AIC has prompted us to expand our skills and capabilities, and as a result, we have entered new industry sectors. Our clients have encouraged us to bring our unique approach to a wider portfolio of challenges, and we have been eager to diversify our business to the benefit of our growth. We have also aimed to recruit the industry's best people to ensure we always make a mark in each new sector we enter.

Our progress is also driven by our commitment to sharing knowledge and always defining and redefining the best industry practices. We capture our innovation on a given project and then reapply it in new sectors and contexts.

We manage our sector expansion with care, ensuring that we accept commissions only when we have the skills and people in place to deliver the level of AIC service that our clients have come to expect.

We seek to further and promote collaboration, integrity and honourable practice. Our final goal is to provide a professional service that is safeguarding our client's legitimate interests and ambitions efficiently and effectively.

**Eng. Ahmed Almazrouei**  
Chairman



“ We thrive on creativity and ingenuity. We are convinced that there is often a better way to do things. So we seek opportunities to innovate in the services we deliver, our business development and our operations. Because we believe that appropriate innovation adds value we encourage our people to be entrepreneurial and creative. ”

## Vision, Mission & Values

### Vision

AIC aspires to be a leading architectural, engineering and project management firm operating regionwide.

### Mission

To consistently deliver innovation solutions reinforced by responsive client service and a commitment to quality and excellence.



**Values**

Our values drive us forward as an organisation and bind us together as a community. AIC has maintained its status and reputation by incorporating our values in:

**Client Focus**

We recognise that our success is based on our strong relationships with our clients and we strive to provide feasible, innovative and sustainable solutions which exceed our clients expectations.

**Excellence**

We constantly strive for excellence, recognising that excellence is defined by our clients. We apply state-of-the-art technologies and seek innovation and improvement. The core of what we do is ensuring engineering and design integrity.

**Teamwork**

We know that to add great value to clients, we have to work together. We provide the best people and bring them together in teams to deliver our services. Our teams are diverse in their disciplines, ideas, perspectives and cultures.

**Diversity**

We are committed to diversity. The richness of our relations and the success of our pursuits, individually or collectively, are influenced by the extent to which we respect, listen to and appreciate one another irrespective of differences.

**Innovation**

We thrive on creativity and ingenuity. We are convinced that there is often a better way to do things. So we seek opportunities to innovate in the services we deliver, our business development and our operations. Because we believe that appropriate innovation adds value, we encourage our people to be entrepreneurial and creative.

**Ethics**

We have a steadfast adherence to a strict moral and ethical code. Enduring commitment to professional ethical standards is deeply ingrained in every professional conduct and business action undertaken by all AIC staff members. Moral accountability is the backbone of our firm's operations. We bring honesty and sincerity to our work; being candid with our clients, and providing them with the insights and solutions they need.

# Organisation Structure



# Why Altorath?



We are the 'FIRST AND ONLY LOCAL CONSULTANT' awarded  
Sheikh Khalifa Excellence Award (SKEA)



## +800 professionals & experts

With a manpower pool of over +800 of highly skilled Architects, Engineers and other disciplines, equipped with state of the art technologies, we are very well versed in designing and managing (PMC) any project of any size, nature or complexity with fast staff deployment and immediate commencement of work.



## 30 Years of extensive local experience & knowledge

Over the past three decades from our work in the region, we have gained an extensive local experience and practical knowledge of clients' needs, local culture design knowledge, markets trends, excellent relations with projects stakeholders, vast database and a wide networks of specialized experts & consultants. We offer creative, robust and practical solutions to realize our clients' objectives.



## Multidisciplinary firm & one stop resource

We are a multidisciplinary & one stop resource firm, with all in-house design & management staff members in all disciplines: Architecture, Planning, Structural, MEP, Infrastructure, Environmental, HSE, QA/QC, Cost Estimate & QS and Project Management. We offer our clients a multitude and comprehensive range of services all under one roof.



## Approach

AIC is a firm with a clearly defined organisation structure. The organisation structure is designed to ensure 'right people on right job' with clearly defined roles and responsibilities.

We operate via a highly efficient, robust and cross-functional structure that allows for a healthy and progressive growth in size, skill and quality.

The Organisational Chart shows the relationship between the company's various divisions and departments. All chart components contribute as required to the overall effort of engineering and project management on any specific project.

At AIC we bring together extensive capabilities to each project and to all of our clients, not just through our talented and experienced professionals but also a strategic partner to our clients. A high level executive input and oversight to all our projects ensures that we bring value added assistance and the most feasible, functional, cost effective and successful solutions.

It is the policy of AIC to assign to each of its projects a dedicated team. This team is composed of a group of skilled individuals assigned from various divisions on a full-time basis as required. Team members perform their respective duties in accordance with a set planned schedule and budget. Headed by a Project Manager responsible for directing all project activities, the Project Team is sustained during the project lifetime. All members of the Team, whilst responsible to the Project Manager for all matters related to the project, remain responsible to their Section and Department heads for quality and conformity with design standards and practices adopted in AIC manuals.





# Services



## Architecture

While our professionals have expertise in diverse areas, they share the a common goal; designing facilities that will meet our clients' needs and contribute to their success.

We challenge and inspire while make sure we provide functionality, to deliver impressive buildings on time and to budget. Our wide-ranging knowledge and expertise, coupled with a profound commitment to our clients needs, enables us to deliver buildings that are beautiful, durable and cost-effective.

We can deliver integrated architecture and engineering, or focus any of our specialists on perfecting a single building detail. What defines a building's performance will depend on its purpose. Listening to the things that make an asset valuable to our clients, and to their buildings users, gives direction to our designs.



## Structural Design

The Structural Design Division provides complete design services from project inception to construction administration. Through constant coordination with architects, contractors, engineers and other design team members we provide accurate, detailed and value-oriented design documents for safe and lasting structures.

We provide economical structural systems, suitable for various project types with a philosophy to create a Structural Design that would complement the Architectural Design facilitating ease of construction.

Our staff are well experienced in designing a large variety of projects some being extremely challenging in their structural design and have extensive experience supervising different projects under strained quality and delivery time conditions.



## Electrical & Mechanical

AIC combines electrical and mechanical engineering knowledge in building systems and intelligent systems technology that ensures this necessary combination of safety, power, and illumination. Our technical ingenuity powers electrical engineering that is design-led and sustainable.

Our electrical specialists work seamlessly with mechanical and public health engineers to create complete building services solutions.

Our flexibility enables us to adapt throughout the design process and interpret specific problems, allowing us to drive hard at a solution. Our mechanical systems create environments that are comfortable for occupants, economic for owners and efficient with resources. We regularly go beyond standard mechanical engineering solutions to create a better balance for clients.



## Industrial Design

AIC has extensive experience in the field of Industrial Design and have a comprehensive understanding of the requirements that follow a successful design with a focus on new technology and sustainability to product comparative designs.

In designing a new system or facility, the AIC team works as an extension of the client's organisation. Starting with specific industry knowledge and client requirements, we introduce the expertise gained from our involvement with similar projects from the manufacturing industry worldwide. We have refined the technique of transferring technologies from industry to industry. Through our knowledge of a variety of clients and industries, we have developed a unique, state-of-the-art expertise encompassing many different processes, methods, and products.



## Healthcare

Design consultancy services:

To provide best expertise to prepare/review/evaluate design proposals of either new health facilities or re-development of existing ones, to ensure complying with HAAD regulations and requirements and best practices in the health care industry.

90% Engineering Inspection services:

"As one of the few consultants approved by HAAD and as part of HAAD procedure to certify the medical facilities; AIC is providing the service of 90 % inspection for hospitals and medical facilities in order to verify the readiness of inspected medical facility and to identify the outstanding works and non-compliances – in accordance to approved design and HAAD regulations.

Utilizing AIC qualified specialist engineers, the inspection is covering the disciplines of Architectural/Medical planning, mechanical, Electrical, communication, IT, Hydraulic, medical gas systems and medical Equipment.

Having the necessary disciplines in house is enabling AIC to provide the 90 % inspection and to report to HAAD within minimal durations."



## Interior Design

At AIC we design interior spaces that improve collaboration, inspire occupants and attract the best employees.

AIC's interior design teams study a client's business drivers and culture and create space that helps them flourish.

Great interior space has extraordinary effects on our wellness and productivity. AIC's design solutions use space, colour, materials, energy and light as tools to create healthy environments that enhance performance.

AIC develops innovate and elegant design concepts that integrate the historic traditions of the Region with the possibilities and materials offered by the most up to date, World-class technology.



## Landscape

The landscape team focuses on the big picture-helping clients to achieve the goals in environment control and landscaping in the most cost-effective way.

Our landscape designers work closely with other specialists to produce more rounded solutions. We become part of integrated design teams from the start. We develop and realise pragmatic ideas that are economic and achievable as well as being better for people and the environment. For clients and design teams, we play an important interpretative role: taking the advice of environmental specialists and translating it into deliverable plans.

We analyse the surrounding environment and give a sustainable solution taking into consideration all the elements which makes a perfect landscape for the setting of the vicinity.



## Infrastructure

AIC is passionate about helping its clients develop and manage their transportation assets and systems to reflect rapidly changing financial and cultural requirements. We provide integrated, whole-of-life solutions that are appropriate to local needs and reflect world best-practice in terms of efficiency, reliability and sustainability. Our portfolio of projects include road maintenance, engineering and construction and transportation infrastructure.

We offer a multidisciplinary approach to projects, drawing on specialists from other sectors to ensure the success of every project we run. And, with the company services spanning the range of all civil engineering disciplines, AIC provides its infrastructure and transport customers with every service they need for a successful project of any size.



التراث انترناشيونال  
Aloorath International  
للإستشارات الهندسية ذ م م  
Engineering Consultants L.L.C

# Services



## Land Surveying

AIC have more than 15 years experience in land surveying works. We have gained experience and successfully provided surveying and incidental mapping services to Public Agencies, Consulting Civil Engineering firms and Contractors.

Our professional surveyors, produce quality surveys in a timely manner, ensuring the first crucial steps of a project. AIC is recognized as a leader in professional land surveying and this is demonstrated through our commitment to our client's projects and the "cutting edge" technology that we utilize daily.

Being involved from the outset of a property-related project, we can lend our expertise to the decision-making process. This allows us to help our clients arrive at solutions that allow them to take maximum benefit from our end-to-end service.



## Urban & Master Planning

AIC has a proven track record of successful urban design and planning within the Gulf region. AIC understands that sound urban design lowers the costs of urban management, controls both capital expenditures and current costs for public and private transportation and utilities operators, as well as creating efficiencies for private business location and subsequent operations.

Our planning staff represent a full complement of professionals with experience in architecture, engineering, planning and master planned communities. We work with our clients to move them beyond the limits of their past by focusing on helping them progress into a sustainable future.

Our work is highly regarded and based on the belief that good design is indivisible from good planning.



## Third Party Inspection Services for LPG and Hazardous Materials (TPI)

With a strong technical base, AIC/Ultratech has created a specialized group of talented, qualified and experienced engineers to cater to the industry demand of providing third party inspection services to LPG systems/ diesel storage tanks/LPG road tankers/CNG Road tankers/ Flammable and combustible material road tankers/ hazardous material transportation/storage as per the requirements specified by Abu Dhabi civil defence. Our strong fundamentals and organisational support has created significant value addition to the quality of our TPI services.

AIC/Ultratech is certified by Abu Dhabi Civil Defence to review LPG system project drawings/documents and to carry out Third party inspections for hazardous materials storage and transportation as per international and UAE codes and standards.

Highly experienced team of engineers conduct design review and inspections. Efficient staff and qualified inspectors are dedicated to meeting our customer requirements.

We conduct ultrasonic shell thickness gauging test, witness and certify hydro test, pressure & leak test for pressurized vessels, tankers and piping systems.



## Sustainability and Environmental

AIC is extremely sensitive for its role in building an environment which instead of depleting the earth resources to the one that balances with nature. We start from within, and our staff are highly sensitive to every thought they put in the design process making sure not to lose sight to the consequences their decisions can make on the environment. We strive hard to provide our clients with best sustainable solution designing and delivering innovative, aesthetically inspiring and energy efficient solutions.

AIC's innovative approach to sustainable and environment consulting enables clients to achieve their sustainable business and corporate responsibility aspirations. A wealth of technical expertise at AIC enables clients to incorporate sustainability into their strategies, projects and operation.



## Project Management

Our project management experts offer a flexible and highly bespoke service based on a robust and well-proven formula for delivery. We combine many years' experience with proven methods and tools and ensure our client's particular environments and organisations are tackled appropriately and effectively. Confidence of outcomes is increased, risk reduced and quality guaranteed because we understand your business and work closely with you.

Working alongside our clients, we adopt a value-driven approach to defining and articulating business and project objectives before identifying the most effective means to deliver. We provide a full spectrum of project management service from the preparation of business cases and the development of organisation frameworks to straightforward procurement, design, construction delivery and operation.



## Programme Management

At AIC our Programme Management experts identify our clients' strategic options and configure complex programmes from integrated projects.

We have the experience to deliver a course of action that manages risk, time, cost and quality; the leadership to maintain complete control and transparency across the process; and the passion and enthusiasm to drive value at every turn.

By providing strong, expert leadership from the start of a project, we give clients the level of confidence and assurance that they require. We develop programme delivery methodologies that are robust, transparent and based on experience drawn from large scale projects around the world.

AIC bring the top resources and latest technologies to every project, applying our best practices and lessons learned.



التراث انترناشيونال  
Aloorath International  
للإستشارات الهندسية ذ.م.م L.L.C Engineering Consultants





## Experts in regulations & approvals process

We are experts in local building regulations, codes, engineering requirements and approvals process, in addition to our networks with regulatory authorities and consultants. This ensures fastest and most sufficient process of approvals and coordination between client's requirements and local rules and regulations.



## Regional engineering consulting & PM firm

We have over 13 offices across GCC region, and each one reflects the local architectural language, engineering knowledge and cultural spirit of the cities they're. Our regional presence provides with unique and valuable information to continuously enhance the services we provide to our Clients.



## Committed to our social responsibilities

We encourage UAE nationals to join our company and to learn from our long experience. Also we coordinate with universities and local institutes to provide theoretical and practical free training programs for students and fresh graduates of architects and engineers from all nationalities.



# Clients

Since our company began, we have sought to build long term and sustainable relationships with our clients. From diverse and varied backgrounds our clients come from blue-chip multi-national organisations to developers, end users and government entities.

We are eager, resourceful and flexible to clients needs and their challenges. AIC have a proven track record and have been successful on delivering both large-scale and small-scale projects demonstrating flexibility and diversity.

We offer our clients experienced, knowledgeable, and qualified teams, and our processes are designed with our clients needs in mind.

AIC's clients include:





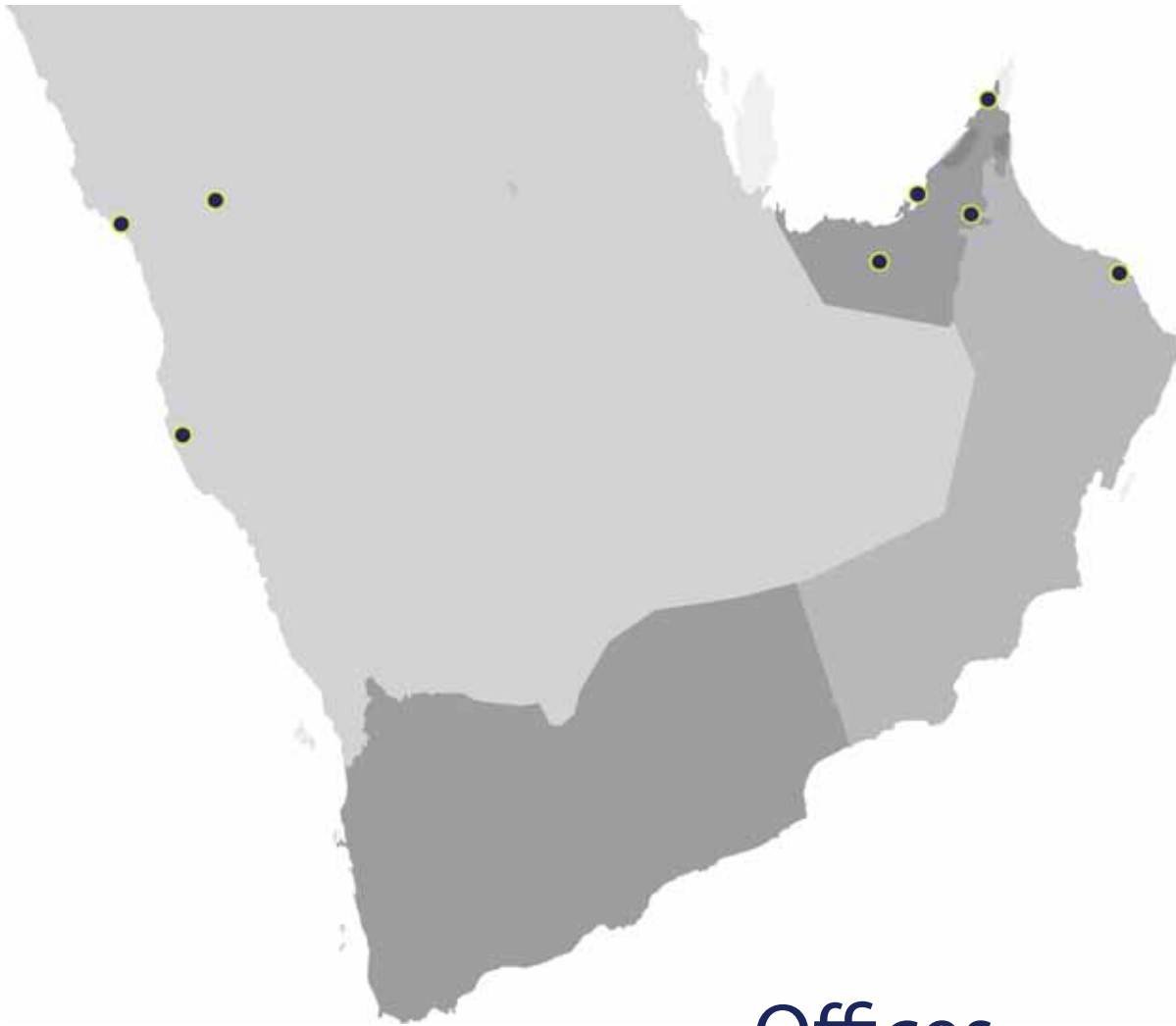
“ We help our clients embrace the leading edge of engineering, technology, and innovation. Our success has been in striking the balance between big ideas and the technical ability to bring them to life. ”

## Technology

Since the founding of AIC in 1989, AIC has combined cutting-edge and forward thinking technology to improve the ways people connect with the world. Through our employees and collaborations, we focus on client satisfaction together with, creating innovative and sustainable solutions. This approach results in continued long-term client collaborations that form the cornerstone of AIC.

AIC have extensive experience in the following sectors:

- Governmental & Corporate Facilities
- Real Estate
- Recreational, Hospitality and Sports
- Fit Out
- Mosques
- Healthcare
- Educational
- Industrial
- Food Industry
- Blast Resistant (Non-Process Buildings)
- Infrastructure & Transport
- Housing & Urban Planning
- Oil & Gas
- Sustainability and Environmental
- PMC Experience



## Offices

“Currently 8 AIC offices”



Abu Dhabi, UAE - Head Quarter  
Al Ain, UAE - Branch 1  
Western Region, UAE - Branch 2  
Ras Al Khaimah, UAE

Muscat, Oman  
Madinah, KSA  
Jeddah, KSA  
Yanbou, KSA



## Office Contacts

---

### Abu Dhabi, UAE - Head Quarter

AAG H.Q. AL A'sam Street  
Abu Dhabi, UAE, P.O. Box: 4644

Tel: +971 (2) 404 1444  
Fax: +971 (2) 678 8620  
Email: admin@altorath.ae

---

### Al Ain, UAE

Tel : +971 (3) 766 6470  
Fax : +971 (3) 766 7470  
Email: admin@altorath.ae

---

### Western Region, UAE

Tel : +971 (2) 884 8377  
Fax : +971 (2) 884 8443  
Email: admin@altorath.ae

---

### Ras Al Khaimah, UAE

Tel : +971 (4) 265 2424  
Fax : +971 (4) 265 2425  
Email: admin@altorath.ae

---

### Muscat, Oman

Tel : +968 (2) 449 6057  
Fax : +968 (2) 449 6475  
Email: admin@altorath.ae

---

### Jeddah, KSA

Tel : +9631 (2) 661 5478  
Fax : +9631 (2) 661 5632  
Email: admin@altorath.ae

---

### Madinah, KSA

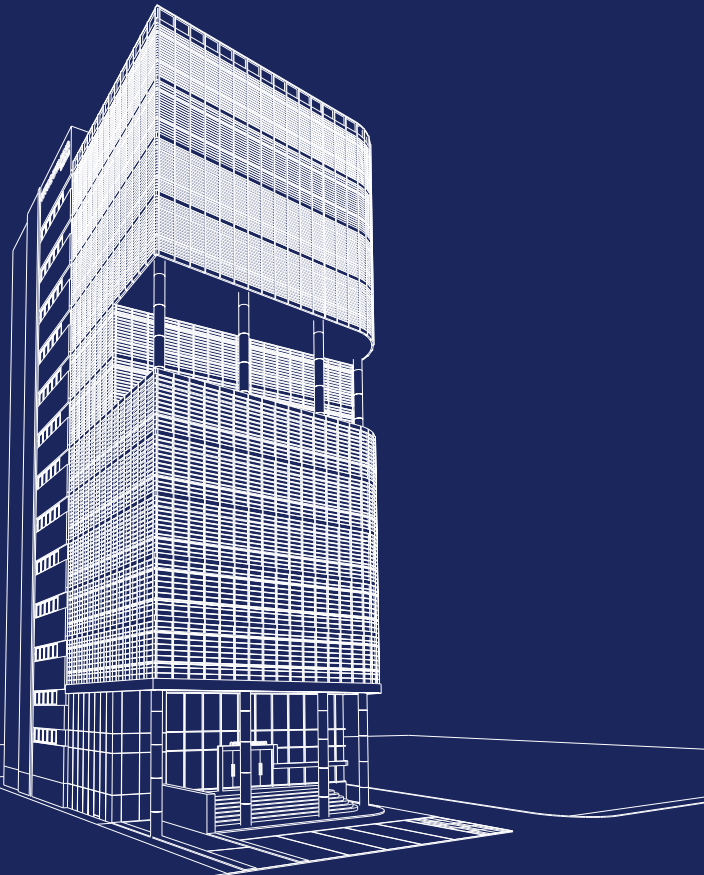
Tel : +9631 (2) 661 5478  
Fax : +9631 (2) 661 5632  
Email: admin@altorath.ae

---

### Yanbou, KSA

Tel : +9631 (2) 661 5478  
Fax : +9631 (2) 661 5632  
Email: admin@altorath.ae

---



[www.altorath.ae](http://www.altorath.ae)

# Awards



AIC is honoured to be the first Engineering Consultancy and Project Management Firm to be awarded the prestigious Sheikh Khalifa Excellence Award. The SKEA was launched by the Abu Dhabi Chamber of Commerce & Industry (ADCCI) back in 1999 as a blue print, a road map and a methodology for continuous improvement aimed at enhancing the competitiveness of the Business Sector in Abu Dhabi and the UAE. It was the first award of its kind to be aligned with the International best practice and adoption of the EFQM Excellence model.

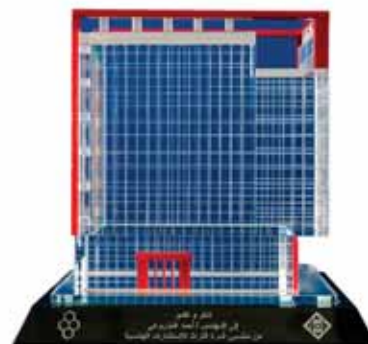


His Highness Sheikh Mohamed bin Zayed Al Nahyan,  
The Crown Prince of Abu Dhabi and Deputy Supreme  
Commander of the UAE Armed Forces delivers H.E Eng.  
Ahmed Mohammad Almazrouei Quality Appreciation  
Certificate (2005 - 2006)



His Highness Sheikh Saif bin Zayed, The Deputy Prime  
Minister and Minister of Interior delivers H.E Eng. Ahmed  
Mohammad Almazrouei, H.H Sheikh Khalifa Bin Zayed  
Excellence Award (2016 - 2017)









“ At AIC, our professionals work seamlessly with clients through the entire life cycle of a project. We use our unparalleled depth and breadth of resources to ensure practical program management solutions that meet today’s project challenges. ”

## Our People

AIC attracts and retain the best talent in the region. Our employees represent a wide range of diverse knowledge, experience, extraordinary professionalism and technical excellence.

Driven by a well-defined set of core values and united by a common purpose - to create, enhance and sustain the world’s built, natural and social environments - our people are our most valuable resource, applying a fusion of science, engineering and design to address pressing environmental and infrastructure needs.





# Projects

Throughout the 30 years of AIC's history we have completed projects in all sectors to a total value in excess of \$30 Billion.

The number of our executed projects and the number of our staff members continue to build on the reputation of being one of the most respected and reliable firms in the GCC, which is gained through our total and constant commitment to quality and client service.

The following pages showcase a sample of our project history featuring projects in the sectors of:

- Governmental & Corporate Facilities
- Real Estate
- Buildings
- Housing & Urban Planning
- Recreational, Hospitality and Sports
- Infrastructure & Transport
- Fit Out
- Masjids
- Healthcare
- Educational
- Industrial
- Food Industry
- Oil & Gas
- Sustainability and Environmental
- PMC Experience
- Blast Resistant (Non-Process Buildings)



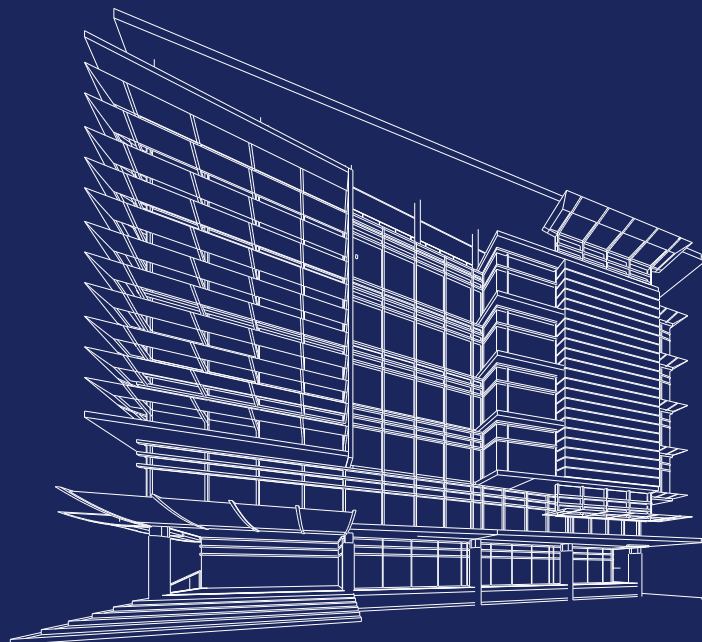
A large, faint, stylized logo of AIC is centered on the page. The logo consists of the letters 'AIC' in a bold, sans-serif font, enclosed within a diamond shape. The diamond's four points are formed by stylized arrows pointing outwards (up, down, left, and right).





## Governmental & Corporate Facilities

Our people are applying their technical expertise to projects of national significance. We are involved in the planning and design of government buildings and facilities. Our teams have drawn on their understanding of the latest technology and developed innovative approaches to offer our clients effective solutions to their challenges. We help the public sector to build communities that will thrive into the future. We not only provide insight into the big picture in sustainability, security and resilience but we also enable pragmatic action. Our teams work with clients to maximise the potential of every scheme, tight deadlines and budgets.





# Civil Defence HQ, UAE

Description:

Musanada commissioned the Architectural Design for the Abu Dhabi Civil Defence HQ located in Mohammed Bin Zayed City, a city that is to be the vision of the city of tomorrow. The area features Offices Spaces, Offices Building, All Civil Defence Departments under one roof, Department of Immigration and Residency, Main Stores, Print Retail Shops, Staff Accommodation and a Multi-Storey Car Park.

Client:	Musanada
Location:	MBZ - Abu Dhabi, UAE
Function:	Governmental
Service:	Design
Area:	B.U.A - 75,000 m²



## Ministry of Labour Office, UAE

### Description:

The Ministry of Labour Office is situated in Al Ain, UAE with the 7,000 m<sup>2</sup> area combining various facilities for both customers and staff. The complex includes a ground floor plus 1 area with administration area, customer waiting and service area, offices and meeting facilities. AIC's role on the project was complete facilities management.

Client: Ministry of Public Works

Location: Al Ain, UAE

Function: Government

Service: Facilities Management

Area: 7,000 m<sup>2</sup>





## TAMM Centres, UAE

### Description:

The 3 TAMM Centres located in the Western Region of Abu Dhabi ( Al Marfa'a / Ghayathi / Liwa) are an integrated Government Services centre. The Centre provides a number of government and non-government services meeting resident's requirements and interests. Services include Department of Municipal Affairs, Western Region Municipality, Department of Planning and Economy, Ministry of Labour, Ministry of Finance (e-dirham card), Ministry of Social Affairs, the General Directorate of Civil Defence, Public Transport Department, Notary Public and Emirates ID.

They also provide services related to banking, telephone services, National Insurance Company, typing and newspaper ads.

**Client:** Western Region Municipality

**Location:** WR - Abu Dhabi, UAE

**Function:** Government

**Service:** Design & Supervision

**Area:** 50,000 m<sup>2</sup> (per site)



# Al Ain Municipality Customer Service Center, UAE

Description:

The Municipality provides customer services and support services for the completion and development of municipal services in Al Ain City and its districts. Al Ain City Municipality stands as a leading institution of development in the area through the role it plays and programmes and services it provides for improving the quality of life to the highest possible standards. The customer service centre plays a role in the strategic operations and the building includes office facilities, meeting room area and public counter systems.

Client: Musanada  
Location: Al Ain, UAE  
Function: Government  
Service: Design, Supervision & Cost Management for Interior  
Area: 20,000 m<sup>2</sup>

GOVERNMENTAL & CORPORATE FACILITIES





## Real Estate

AIC has an extensive track record in the residential sector. Our capability ranges from new build villa properties to high-specification apartment tower complexes.

We bring our understanding of how to maximise the value of a development site, while delivering commercially viable projects and appealing addresses to cities and communities in the GCC.

By offering a range of services from architecture to programme and project management through to construction delivery, we provide our clients with a bespoke offer that ensures maximum value without compromising on quality.





## Meena Plaza UAE

### Description:

The project involves construction of the Meena Plaza Development, which will have 4 towers overlooking the Abu Dhabi skyline and coastal area. The first tower will comprise 47 additional floors, the second and third towers each comprising 35 additional floors while the fourth tower will comprise of 28 additional floors. All the towers will feature up to 20 different types of bedrooms and commercial offices. It also includes service corridors, shopping boulevards, a covered jacuzzi and a wading pool, an indoor pool, a Cineplex, a medical centre as well as car parking spaces. All the towers will share 2 basement levels and 7 double floor podiums. The project is currently under construction and expected to be completed early 2016.

**Client:** MEENA Holdings LLC

**Location:** Zayed Port, Abu Dhabi, UAE

**Function:** Mixed Use, Residential / Commercial

**Service:** Design & Supervision

**Area:** 180,000 m<sup>2</sup>







Meena Plaza, UAE

## Al Reem Island, Marina Square, UAE

### Description:

The site for this project is located on Reem Island, one of Abu Dhabi's newest Island Master Plans located north of the city. Reem Island is accessible by several bridges that connect it to the city of Abu Dhabi and comprise of various programmatic uses including residential, commercial, office, civic and hotel. The Al Reem Island, Marina Square project was initiated by Tamouh Investment LLC to cater for the growing demand for residential housing in Abu Dhabi. The apartment units range from Studio unit of 30 m<sup>2</sup> to 3-Bedroom unit of 110 m<sup>2</sup> and the complex features 6 Villas with accompanying facilities.

Client: Tamouh Investment LLC

Location: Al Reem Island, Abu Dhabi, UAE

Function: Residential

Service: Supervision





# Horizon Towers, UAE

## Description:

Juman Tower located on the water front within the city of lights, praised as a dynamic blend of residences and retail outlets at the ground floor. The Tower's unique design includes a total of 39 floors consisting of 7 podiums, 31 residential floors and one mechanical floor. A mix of 1, 2 and 3 bedroom apartment offering a stunning view of the gulf water and the Icon Tower on the city of lights. Reem Island offers a soothing harmony between the excitement of leisure, the convenience of shopping and the vigour of modern-city living lifestyle. The Architecture services were produced in collaboration with KDI Architects and D.G. Jones and Partners.

**Client:** TSL Properties LLC and Tamouh Investments L.L.C

**Location:** Al Reem Island, Abu Dhabi, UAE

**Function:** Residential / Commercial

**Service:** Design & Supervision



# Maritime Development, UAE

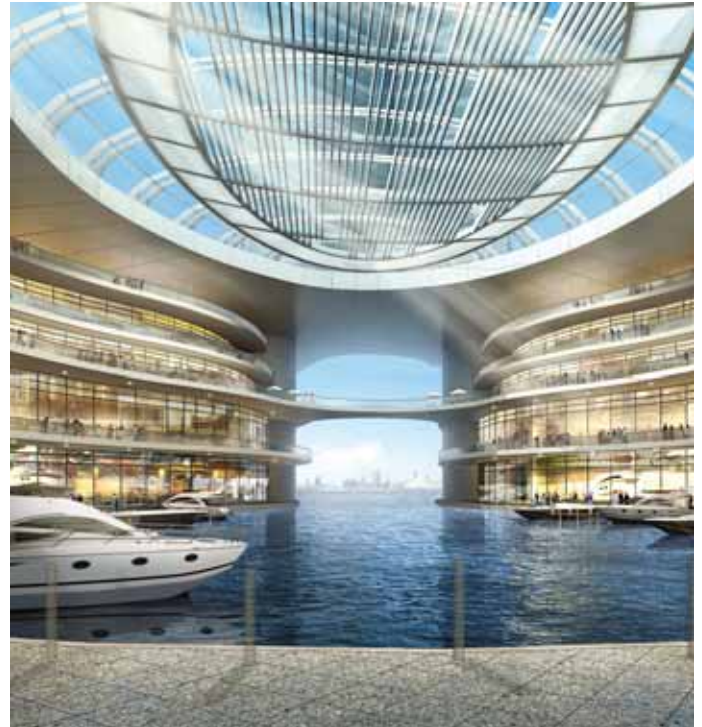
**Description:**

The proposed Maritime Development at the Break Water Abu Dhabi is envisioned to include construction a covered marina, 55 floor tower with 2 basement areas, 2 podiums featuring a mall, a 5 star hotel and residential apartments. The investor's approach to developing the Maritime area will emphasize a long-term, cohesive strategy designed to maximize the value derived from this important landmark project. The project was completed in association with KDI Architects.

**Client:** National Invest Corporation  
**Location:** Break Water - Abu Dhabi, UAE  
**Function:** Mixed Use  
**Service:** Concept Design







Maritime Development, UAE

## LIG Tower, UAE

### Description:

The LIG tower in Abu Dhabi features 3 Basements, Ground Floor, 6 Podiums, a Recreational Area and 14 typical floors. The area also includes parking for 344 vehicles.

Client: LIG Real Estate

Location: Abu Dhabi, UAE

Function: Commercial

Service: Design + Supervision

Area: B.U.A - 31,000 m<sup>2</sup>





# The Crescent Towers, UAE

## Description:

The proposed residential mix apartment tower development is part of larger master planned Al Reem Island development to cater for the fast growing local and expatriate housing needs in Abu Dhabi. It is envisioned as a life styled development. The 32 storey towers incorporate 1, 2 and 3 bedroom apartments, a common central facility including a swimming pool and recreational facilities and car parking facilities on the ground floor and basement. The complex also includes an area of private villas and high end facilities.

Client:	Tamouh Investment LLC
Location:	Al Reem Island, Abu Dhabi, UAE
Function:	Integrated Mixed Residential Apartments
Service:	Full Design Build Tender Documentation
Area:	B.U.A. - 200,000m <sup>2</sup>



## Al Rumaithi Office Tower, UAE

### Description:

Situated in the Tourist Club area of Abu Dhabi the Al Rumaithi Office Tower. The tower comprises of 18 floors plus ground floor and mezzanine level, with each floor containing 4 residential apartments.

Client: ADCE

Location: Abu Dhabi, UAE

Function: Commercial / Residential

Service: Design & Supervision

Area: B.U.A. - 8,500 m<sup>2</sup>





## Emerald Gateway, UAE

### Description:

The Mixed Use development at Abu Dhabi Gate comprises of 10 floors plus the ground area combining office spaces, residential apartments and retail areas on the ground floor. 2 designs were produced for the competition in collaboration with Arch-Tag.

Client: Emerald

Location: Abu Dhabi Gate - Abu Dhabi, UAE

Function: Mixed Use

Service: Design Competition

Area: B.U.A - 10,000 m<sup>2</sup> x 2



# Paragon Bay Mall, UAE

Description:

The Paragon Bay Mall is located on the Al Reem Island in the city of Abu Dhabi. It lies at the heart of an expanding residential district. The development is positioned as a lifestyle centre with a unique range of speciality, daily and home shopping. AIC's role on the project is design coordination, project management & site supervision.

Client:	Tamouh
Location:	Al Reem Island–Abu Dhabi, UAE
Function:	Recreation
Service:	Project Management & Site Supervision
Area:	26,300 m²



## Buildings, UAE

### Description:

AIC have completed the Design and Supervision of many multi-story buildings that have been built in Abu Dhabi. Covering the areas of Musaffah, Mohammed Bin Zayed City, Madinat Zayed and the Tourist Club the buildings typically feature between 4 and 20 floors with a mix of residential and office space with retail space on the ground floors.

Client: Various

Location: Abu Dhabi, UAE

Function: Residential / Commercial

Service: Design & Supervision

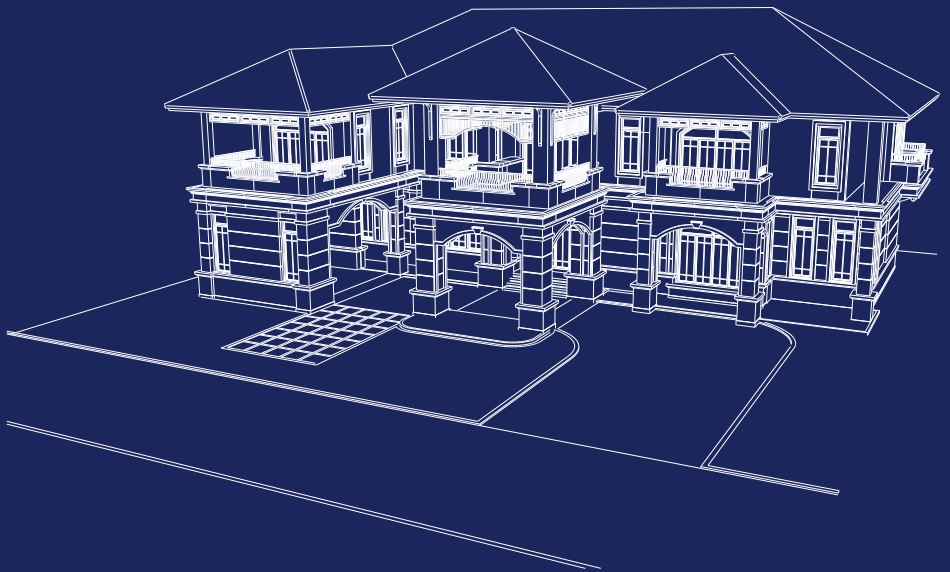








## Housing & Urban Planning





## Al Ruwais Housing, Phase 3, UAE

### Description:

The Al Ruwais Housing project is located 240 kilometres west of Abu Dhabi in the Western Region of Abu Dhabi emirate. The Ruwais industrial and housing complex has been developed by ADNOC as a major contributor to the national economy. The Ruwais Housing Complex, covering an area of six square kilometres, is located 10 kilometres away from the industrial plants. In line with ADNOC's policy of offering staff and their families all modern amenities, comfortable air-conditioned housing units are set in beautifully landscaped grounds. The complex has its own shops, schools, banks, mosques, clinic and hospital, and a wide range of sporting and leisure amenities including a beach club and an 'in-house' TV and video station.

Client: ADNOC

Location: Al Ruwais - Abu Dhabi, UAE

Function: Residential

Service: Master Plan, Infrastructure, Building

Area: 12,000,000m<sup>2</sup>





# Al Ruwais Housing, Phase 4, UAE

## Description:

Ruwais Housing Complex created in 1980, a multi-million-dollar investment that provides residential facilities for employees of the Ruwais Industrial Complex, ADNOC's downstream operations hub. Ruwais was initially planned as a self-contained town centred on the oil and gas industry and the Takreer Ruwais Refinery. A natural gas plant, fertilizer plant and marine terminal are also located in the city. Distributed over a geographical boundary of 15 km2 this complex includes over 7,000 residential units - ranging from one-bedroom apartments to four-bedroom, double-story 'executive' villas - and features a number of recreation parks, planted with more than 22,000 trees.

The complex also features a modern general hospital and purpose-built clinic, eight schools - providing elementary to secondary education - a shopping mall with over 261 outlets, and four recreation centres. AIC scope was the Design consultancy services for the expansion of Ruwais Housing Complex Phase -IV including the below buildings:

- Married staff accommodation 40 Nos. G+5 buildings,
- Bachelor staff accommodation 14 Nos. G+2 buildings,
- Management staff accommodation 663 Nos. Villas.

Client:	ADNOC
Location:	Ruwais, Western Region Abu Dhabi, UAE
Function:	Residential
Service:	Design
Area:	12,000,000m <sup>2</sup>



## Al Falah City, UAE

### Description:

Al Falah is a master-planned community developed for UAE nationals which occupies a 12.5 million square metre area and is located on the east side of the Abu Dhabi International Airport and Abu Dhabi - Dubai highway. Al Falah consists of five 'villages' and offers 4,857 villas. Each of the five villages is arranged around its own "Village and Neighbourhood Centre" and contains a mosque, a market square, and a mix of local shops and offices.

Client: ALDAR Properties

Location: Abu Dhabi, UAE

Function: Residential

Service: Infrastructure & Engineering Design

Area: 12,000,000m<sup>2</sup>



## Neima & Salamt Residential Complex, UAE

### Description:

The Neima and Salamt Residential Complex consists of 2 zones. The Neima zone incorporated the construction and related infrastructure (Road, Sewage Network, Water Supply Network, Power Supply Network, Telephone Network and Substation Power Supply) for 38 Villas. The Salamt zone involved the same specification and services for an area of 13 villas.

Client: Musanada

Location: Al Ain, UAE

Function: Residential

Service: Design, Supervision, Master Plan & Infrastructure





## Design for Housing Villa

### Description:

This design is simple yet elegant with fine artistic lines that are unique within the region. This expression was selected for the larger unit types as local families are patriotic and are embedded in their culture thus preserving the identity of its people.

The Villa types in this case are supported centrally with a courtyard and skylight atrium. The area includes, the Main House (2 ½ storeys), Majlis, Car Porch and Driver and Mail Accommodation. The design included 5 types of options.

Client:	Private
Location:	Various Municipality Districts
Function:	Residential
Service:	Concept Design
Area:	Individual 750 m <sup>2</sup> / 80 m <sup>2</sup>



## Taxi Village, Musaffah, UAE

### Description:

The project was undertaken for the benefit of its end-user – TRANSAD, the Abu Dhabi Taxi Service regulators with a plaster planned 'One Stop Hub' with complete facilities for the convenience of the Taxi Franchisees and driver community. Thus, ensuring the Abu Dhabi will preserve and enhance world class (taxi) transport services for the benefit of locals and foreign visitors. The area comprises of Four (4) Prototype Franchisee Operation Complexes with mother plot, each with Operational Office / Coordination Centre / Dining Hall & Indoor Recreation. Within each plot are Drive In-Taxi Queue Lanes, Driver Accommodation Facilities, Vehicle Maintenance Warehouse, Vehicle Fuelling Station, 400 outdoor Taxi Parking spaces, Outdoor Game Facilities and each with a Masjid.

Client: Department of Transport Abu Dhabi

Location: Musaffah Industrial Zone, Abu Dhabi, UAE

Function: Integrated Industrial One-Stop Hub

Service: Concept Design & Master Plan Report

Area: 203,000 m<sup>2</sup>



# Ajman Housing Project, UAE

Description:

The project awarded to Altorath with 380 villas redesign and supervision to develop the previously approved villas types by client in coordination with clients engineering department on virgin land in emirate of Ajman during the design process road design problem raised since no approved or previous studies done for the land ether from the client or Ajman authorities Altorath Infrastructure department counteracted to this obstacle to generate will designed roads and villas entrance levels and avoid future problem this study and scope was not in our original scope, the project tendered to the bidders and the project cost come high over the project budget and planed cost since this villas will sale to the Low income people at cost price, so the project tender cancelled and re-tendered after Value Engineering study and provisions made to reduce the cost successfully and awarded to the recent contractor

Client:	Sheikh Zayed Housing Programme
Location:	Alraqayb-2 – Ajman, UAE
Function:	Residential
Service:	Design & Supervision
Area:	103,125 m²





# Rehabilitation & development of the Historical Heritage ports on the Red Sea area (Stage 1) , KSA

## Description:

AIC was awarded for the scope of rehabilitation and development of the Historical heritage ports in Al Wajh area, Amlaj area, Dibba area and Yanbou area all on the Red sea by the Saudi Commission for Tourism and National Heritage Authority .

The services provided by AIC were the Study, Conditional assessment, Survey, redevelopment and Urban design of the four heritage ports.

Client:	Saudi Commission for Tourism and National Heritage
Locations:	Al Wajh port, Dibba port, Amlaj port & Yanbou port, KSA
Function:	Mixed Use
Service:	Study and Urban Design



Alwajh port, KSA





Dibba port, KSA



# Private Palace, UAE

Description:

Located in Abu Dhabi this confidential Private Palace project is to be built on a 20,000 m<sup>2</sup> plot size. Designed in a traditional Arabic style but featuring modern amenities, the area includes a main Majlis and Dining Hall, a small Majlis with catering and kitchen facilities, a VIP Suite and VIP Rooms as well as all the standard facilities and amenities you would expect from such a grand structure. This project was completed in collaboration with ArchTAG.

Client:	Confidential
Location:	Abu Dhabi, UAE
Function:	Residential
Service:	Design Competition
Area:	B.U.A. - 2,500 m <sup>2</sup> Plot - 20,000 m <sup>2</sup>







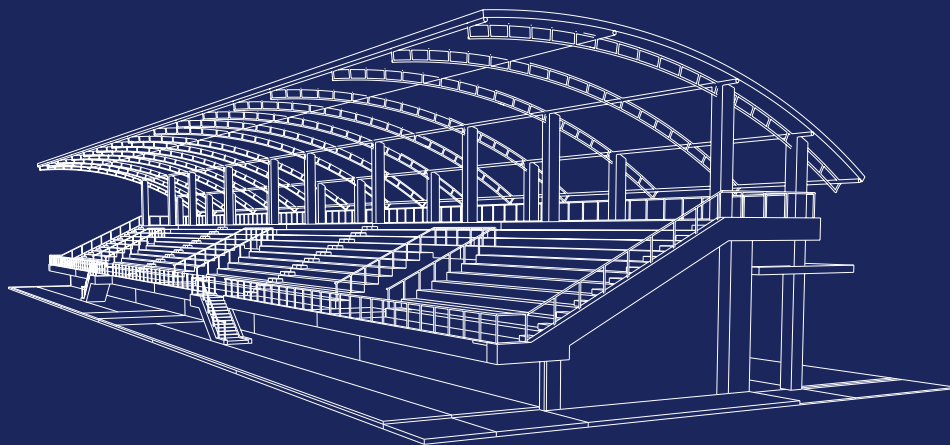
Private Palace, UAE



## Recreational, Hospitality & Sports

Our Sports and Recreation specialists design through the eyes of the venue's users, always focusing on promoting human interaction and creating vibrant gathering places that build genuine connections.

We design these facilities to celebrate identity and inspire cultural changes. They also integrate high-tech systems and have flexibility to accommodate future needs.





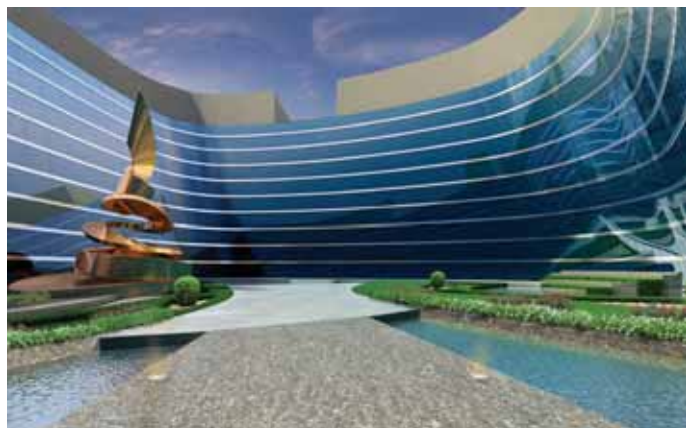
# ADNOC Distribution Recreation Club, UAE

Description:

ADNOC Distribution intend to construct a recreation centre at Musaffah –Abu Dhabi to facilitate the ADNOC Distribution members.

The vision to build such a project is to provide the services, facilities and recreation programs to promote health, wellness and activities paralleled to work, Proposed recreation centre design is based on Metaphor architecture using the centralized design principal providing the symbolic form with natural light and ventilation.

Client:	ADNOC Distribution
Location:	Musaffah –Abu Dhabi, UAE
Function:	Recreation
Service:	Design
Area:	19,000 m²





# ADNOC - Development of Existing Beach at Ruwais, UAE

Description:

Abu Dhabi National Oil Company (ADNOC) aims to develop the existing beach at Ruwais through rehabilitation of the existing Beach Club and Boat Marina. The project aims to create a recognized recreational destination which is sustainable and unique, and provide developments which are appropriately balanced and will meet to the existing conditions of the project site.

The project site covers an area of 63,300 m<sup>2</sup> with around 200 meter sea frontage on the Arabian Gulf.

Client:	Abu Dhabi National Oil Company (ADNOC)
Location:	Ruwais –Abu Dhabi, UAE
Function:	Recreation
Service:	Design
Area:	63,300 m <sup>2</sup>







# H.H. Sheikha Fatima Bint Mubarak Park UAE

Description:

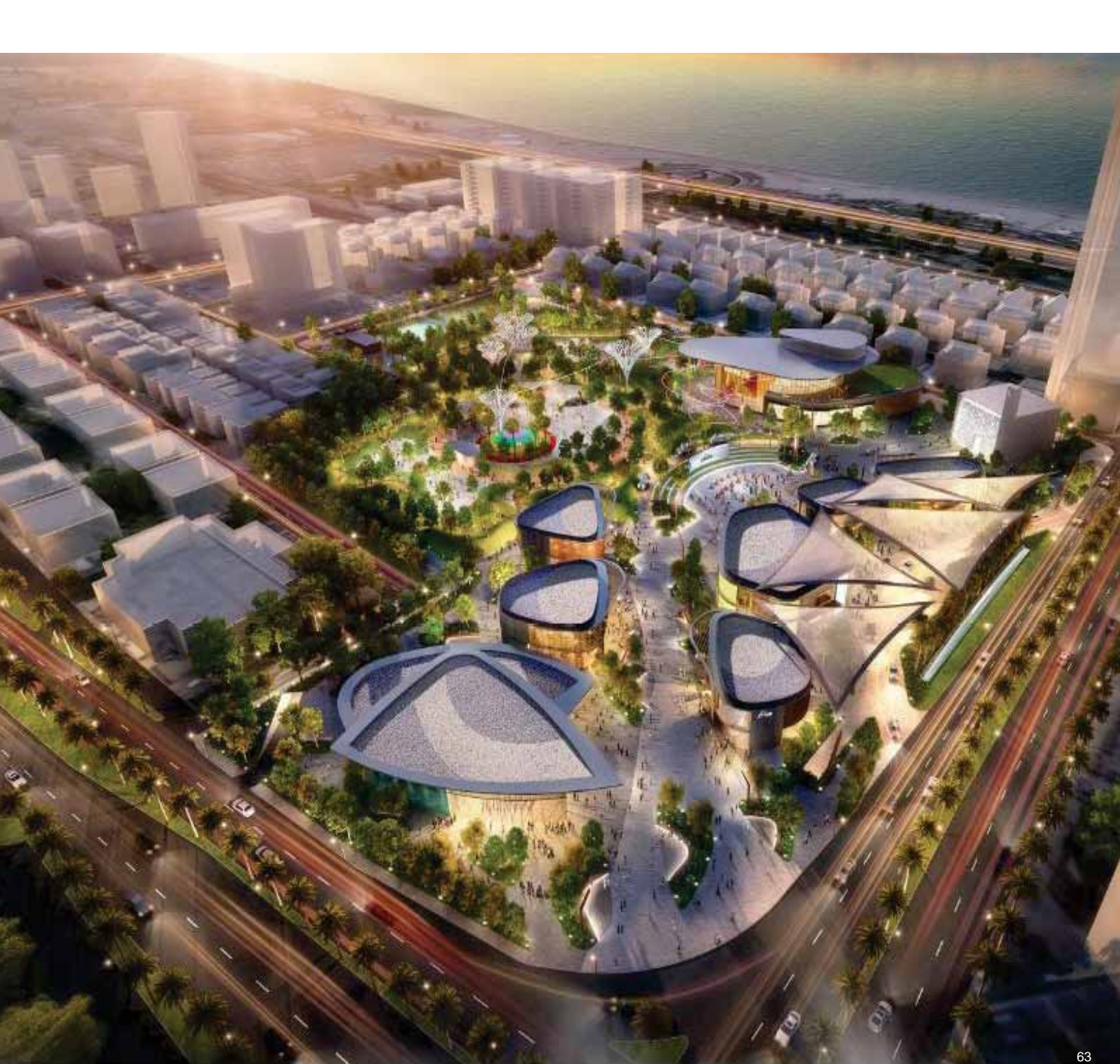
Together with the Contractor AIC was responsible to deliver complete design drawings for obtaining building permits and supervision of the H.H. Sheikha Fatima Bint Mubarak Park, one of the Leading prestigious projects in 2018 which is located in the center of Abu Dhabi city, next to Corniche Road.

Client:	Capital Investment L.L.C.
Location:	Abu Dhabi UAE
Function:	Recreational
Service:	Design & Supervision (AOR)
Area:	46,000 m²



RECREATIONAL, HOSPITALITY & SPORTS







# Reptile Park - Al Ain Zoo, UAE

Description:

The Reptile House is located in Al Ain Zoo, with an area of 2016 m², the building shape is quite inspiring as it represents the shell of the Tortoise Characterized by special bony shell acting as a shield, which is the building. The building interior is divided into several key zones, These zones are hierarchical organization starting from the Arabian deserts and ending with the Asian adventures. Each zone is a different entity yet they are all connected, each zone or areas the animal's home where it lives, feeds and rest. It is a simulation of the animal's home land where it should contain all the systems of facilities in order to provide the best atmosphere for the inhabitant.

The idea of landscape immersion is, to replicate the species' natural environment and to place the viewer within the animal's habitat. The concept reflects the increasing awareness of the interdependence of living creatures and their environment. Plants have become the major feature in this type of animal exhibit.

Client:	ZAPIA
Location:	Al Ain, UAE
Function:	Animal Exhibits
Service:	Design
Area:	2,000 m² + 7000 Sq. External Exhibits & Landscape







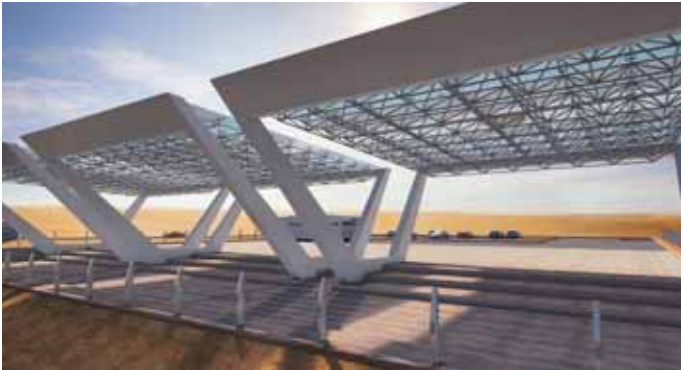
# Shams Visitor Centre, UAE

Description:

SHAMS Power Company wants to have dedicated visitor centre with standalone operation to manage the increasing number of visitors in SHAMS-1 power plant as the strategic project set the example for future plant in the region.

SHAMS Power Company aims to modify and upgrade the fire truck house to serve as a visitor centre, build new fire truck shed and visitor shed in addition to the visitor platform area with its access road. The project aims to create an educational and tourist attraction for the residents and visitors for a wide range of audiences, from VIPs to school children.

Client:	SHAMS Power Company
Location:	Western Region –Abu Dhabi, UAE
Function:	Recreation
Service:	Design
Area:	4,200 m <sup>2</sup>



## Fitness Time Gym, KSA

### Description:

Located in Abha, Fitness Time Gym was constructed with site supervision being conducted by AIC - KSA branch along with the preparation of BIM Design for the project as well.

Client: Leejam Sports Company  
Location: Abha, KSA  
Function: Sports  
Service: BIM Design & Supervision



## Yas Island Rotana Hotel, UAE

### Description:

Situated in the cluster of hotels on Yas Island on the outskirts of Abu Dhabi, the 4-star Rotana Hotel consists of 308 rooms including 27 suites. The ground floor has ballroom, health spa, 6 restaurants and business facilities. The building has been designed to reflect and promote Rotana Hotel Groups quality of service, and aesthetically to incorporate elements of Arabic design, and provide a contemporary style of architecture. AIC's role in construction and supervision included the neighbouring Centro, the 3 Star sister hotel, also part of the Rotana Hotel Group.

Client: Rotana Hotels & Resorts  
Location: Yas Island, Abu Dhabi, UAE  
Function: Hospitality  
Service: Construction & Supervision





# Yas Island Centro Hotel, UAE

## Description:

The Centro at Yas Island is a contemporary concept that is young and fresh in its approach, original in its presentation, and dynamic in its offerings. It is designed for a new generation of travelling executives who demand both finesse and functionality. Created for purpose - from the ground up - Centro signals the launch of a new genre of executive hospitality. With chic looks and slick delivery underlying its service offering, Centro is an inspired philosophy and sets an unparalleled benchmark for the budget conscious business traveller.

The 3-star Centro Hotel has 259 rooms spread over 6 floors. The hotel features 2 restaurants, a retail outlet and swimming pool and is situated next door to the Rotana Yas Island Hotel.

Client: Rotana Hotels & Resorts

Location: Abu Dhabi, UAE

Function: Hospitality

Service: Construction & Supervision

RECREATIONAL, HOSPITALITY & SPORTS



## Al Wathba Camel Race Track, UAE

### Description:

The Al Wathba Camel Race Track is situated about 45km east of Abu Dhabi on the Al Ain Road and is one of the UAE's biggest camel racing facilities. AIC's role included the Design and Supervision of the main Grand Stand and on site parking facilities. The project was innovative, function and sensitive to local environmental condition.

Client:	Musanada
Location:	Abu Dhabi, UAE
Function:	Sports & Recreation
Service:	Design & Supervision
Area:	B.U.A - 8,000 m <sup>2</sup>





## Ghantoot Stables, UAE

### Description:

Set in 300 hectares of perfectly-manicured grassland, Ghantoot Racing & Polo Club offers an oasis of calm and tranquillity amid the hustle and bustle of desert life. The UAE's only Royal club boasts world-class polo and equestrian facilities and is recognised as one of the most prestigious clubs of its kind in the world. AIC were commissioned for design and supervision of 2 new buildings accommodating 51 separate stables including a service block and training yard.

Client: Ghantoot Racing & Polo Club

Location: Ghantoot - Abu Dhabi, UAE

Function: Sports & Recreation

Service: Design & Supervision

Area: B.U.A - 1,500 m<sup>2</sup>

RECREATIONAL, HOSPITALITY & SPORTS





## Al Ain Equestrian, Shooting & Golf Club, UAE

### Description:

The AESGC facility is a hospitality oriented destination in Al Ain. The Equestrian area includes the main club house, 168 concrete air-conditioned stables and 222 tented temporary stables, a main grandstand and show jumping area, horse pool and racetracks.

Client: AESGC

Location: Al Ain, UAE

Function: Sports & Recreation

Service: Design & Supervision



# Infrastructure & Transport

In the 21st Century, an integrated approach to the planning and management of transport and infrastructure is key to enabling clients achieve sustainable development. From conception to operation, AIC helps clients provide safe, efficient and cost-effective transport systems that deliver real social, economic and environmental benefits to the community.

AIC offers a multidisciplinary approach to projects, drawing on specialist from other sectors to ensure the success of every project we run. And with company services spanning the range of all civil engineering disciplines, AIC provides its infrastructure and transport clients with every service they need for a successful project of any size.

AIC's Infrastructure and transport services:

- Transportation engineering
- Road engineering and management
- Bridge engineering
- Tunnels
- Harbors
- Airports
- Acoustics & noise
- Water and wastewater engineering
- District heating
- Power transmission & distribution
- Hydrological surveys

Related services:

- Environmental impact assessments (EIA)
- Environmental engineering
- Project engineering
- Project management/EPCM
- Construction management
- Geology
- Soil mechanics
- Concrete and building materials testing







Infrastructure Projects



# Design of Roads & Infrastructure – Ghayathi City, UAE

Description:

Design Services From Concept To Detailed Stage, Obtaining Authorities And Stakeholder Approvals, Tendering Stage Services, Post Tender Services, For Internal Roads, Storm Water Drainage, Street Lighting, Water Supply, Power Distribution, Irrigation Network, Landscape / Street Scape , The project covers an area of 500,000 m².

Client:	WRM
Location:	Western Region
Function:	Infrastructure
Service:	Design
Area:	500,000 m²

INFRASTRUCTURE & TRANSPORT



## Al Falah Sector FA-05 UAE

### Description:

Design Consultancy Services for infrastructure works from concept design till post tender stage for the development of Al Falah Sector FA-05.

The infrastructure design work includes, internal roads, sewerage networks, storm water drainage, street lighting, water supply, power distribution, irrigation network, soft landscape, etc.

Client: MUSANADA

Location: Al Falah

Function: Infrastructure

Service: Design

Area: 220 ha



# Design Services for MBZ (Zones D & G) UAE

Description:

The primary objective of the project is to provide a professional design package leading to an efficient and safe roads network, parking, storm water drainage and utilities networks to complement the final master plan objectives for the development of Zones D & G (Sectors Z20, Z21, Z22, Z23, Z24, Z26, Z27, Z32, Z33 and Z34).

Client:	MUSANADA
Location:	Mohammed Bin Zayed
Function:	Infrastructure
Service:	Design
Area:	1026 ha

INFRASTRUCTURE & TRANSPORT





## Reinstatement of Roadway Network Assets, UAE

### Description:

- Manage & Supervise the reinstatement works for roadway assets
- Reporting the construction activities which might have negative impacts on any of the assets owned by M/s. ADM.
- Initial survey (GIS) & creating new permitting system.

Client: Abu Dhabi Municipality

Location: Inside Abu Dhabi

Function: Infrastructure

Service: Design & Supervision



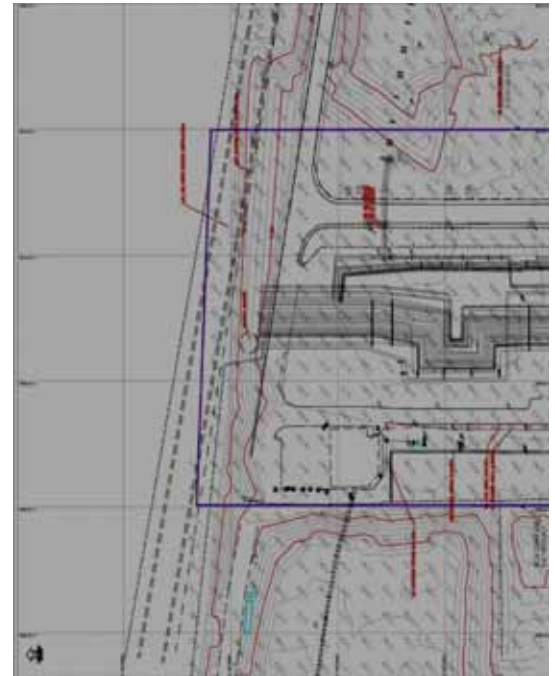
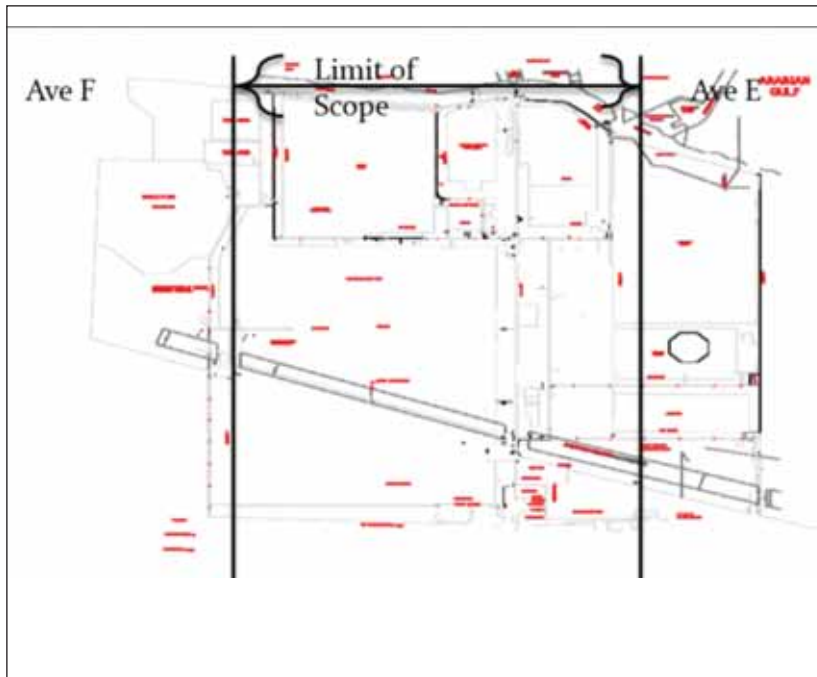
## Location & Mapping of Underground Utilities in the Ruwais Industrial Area, UAE

### Description:

The works mainly consist of the preparation of as built drawings and elaboration of digital mapping which includes but is not limited to the following:

- Collection of available drawing from OPCO's
- Review and analysis of available existing drawings
- Site survey
- Field detection of underground services including topographical survey

Client:	Takreer
Location:	Al Ruwais
Function:	Government
Service:	Survey Underground
Area:	25 Km <sup>2</sup>



# Fit Out

Great interior space has extraordinary effects on our wellness and productivity.

AIC's design solutions use space, colour, materials, energy and light as tools to create healthy creative environments that enhance performance.

Our combined efforts of architectural, interior designs, acoustical, light and environmental design engineers produced unique interior designs for project as challenging as hotels and visitor centre museums.





ADSSC OFFICES 'INTERIOR DESIGN & SUPERVISION' - AL AIN



SHAMS VISITOR CENTER 'DESIGN' - ABU DHABI





## Masjid

AIC have specialist expertise in the design and build of various masjid projects in the region.

Being a 100% UAE National Company we understand the culture and region and we constantly exploring ways to balance tradition with new demands of religious practice.





## Masjid, UAE

### Description:

AIC had a great experience in the design and construction supervision of different types and styles of masjid designs with several architectural schools.

Our mosques are evident providing a wide range of engineering studies, design and construction management services around GCC and Africa. Which formalized enhanced methods for the design flexibility, circulation, the efficiency of usage and even additional trendy design aspects which totally served the mosques holy functions

Location: Abu Dhabi, UAE

Function: Masjid

Service: Design & Supervision

Area: 900 m<sup>2</sup> - 2,200 m<sup>2</sup>







# Sheikh Hazza Mosque, UAE

## Description:

Situated in the Tourist Club area of Abu Dhabi the Sheikh Hazza Mosque is one of the largest in the region. The 10,000 m<sup>2</sup> area building is built on a plot of 22,500 m<sup>2</sup> and can hold a total of 11,000 worshippers. The complex includes Prayer Halls for both Males and Females, ablution areas, kitchens and catering area and accommodation for Imam and Moazen.

Client: Private  
Location: Abu Dhabi, UAE  
Function: Mosque  
Service: Design & Supervision  
Area: 10,000 m<sup>2</sup>



## Prototype Mosque, UAE

### Description:

The prototype mosque featured 3 traditional styles with the capacity to hold 450 Male worshippers and 50 Female worshippers. The 900 m<sup>2</sup> area includes traditional amenities and facilities with the same lay-out being reflected on each of the sites in Abu Dhabi.

Client: ANQAF

Location: Abu Dhabi, UAE

Function: Mosque

Service: Design & Supervision

Area: 900 m<sup>2</sup>





# Abu Said Mosque, UAE

## Description:

The Abu Said Mosque in Al Marfa'a Abu Dhabi caters for a capacity of 1520 Male worshippers and 213 Female worshippers in a total area of 3330 m<sup>2</sup>. Included in the area is the main Prayer Hall, ablution area and accommodation for Imam and Moazen.

Client: G.A. of Islamic Affairs  
Location: Al Marfa'a - Abu Dhabi, UAE  
Function: Mosque  
Service: Design & Supervision  
Area: 3,300 m<sup>2</sup>



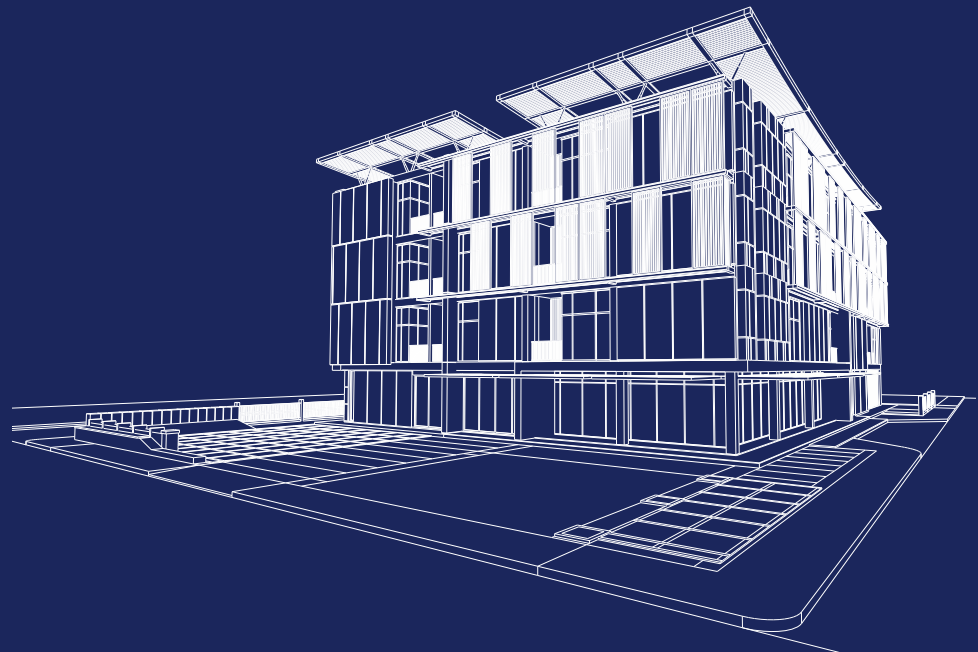


## Healthcare

Through our broad understanding of the healthcare environment, we have the expertise to ensure patients, clinicians and administrators benefit from well-designed facilities.

New technologies, medical advances and changing demographics are driving massive change in models of care. At AIC, a sustainable approach to healthcare means designing solutions that anticipate future needs and support strong long-term development for public and private sector providers.

We work in partnership with healthcare providers, funders, clinicians, architects and contractors to deliver world-class facilities and transformative management programmes.



# Corniche Hospital, UAE

Description:

The Corniche Hospital is the premier maternity hospital in the Middle East, located in downtown Abu Dhabi. As part of the hospitals continuous endeavor to offer premier services to their patients, Corniche Hospital completed the renovation and expansion to the existing Neonatal intensive care unit, Urgent Care, Ambulatory Services as well as the renovation and expansion of the Out-patient Department. AIC's involvement included full facilities management services, medical equipment maintenance and MEP maintenance.

Client: Abu Dhabi Health Authority

Location: Abu Dhabi, UAE

Function: Healthcare

Service: Facilities Management





# Al Rahba Hospital, UAE

## Description:

Opened in August 2003, Al Rahba Hospital caters to the healthcare needs of the local community. The hospital is located just a few blocks from the E11 highway connecting Dubai and Abu Dhabi. It has a very busy and highly competent emergency department which serves over 200 visitors per day. Licensed for 163 beds, the hospital is currently operating 116 beds, and recently expanded its Neonatal Intensive Care Unit. AIC's role was in the expansion of the hospital.

Client: Healthcare Authority

Location: Rahba, Abu Dhabi, UAE

Function: Healthcare

Service: Design & Supervision



# Al Marfa'a Hospital, UAE

Description:

Al Gharbia Hospital consist of 6 Hospitals Al Marfa'a built in 1999 with a current capacity of 38 beds, provides emergency services as well as specialized medical care in the fields of Internal Medicine, Paediatrics, Ophthalmology, Obstetrics and Gynaecology, General surgery and Orthopaedic, ENT, Dialysis, Mother and Child Health and Ophthalmology services. AIC was trusted with the Design and Supervision of the extension to the hospital.

- Client:

ADEC
- Location:

Western Region, UAE
- Function:

Healthcare
- Service:

Design & Supervision
- Area:

38 Bed



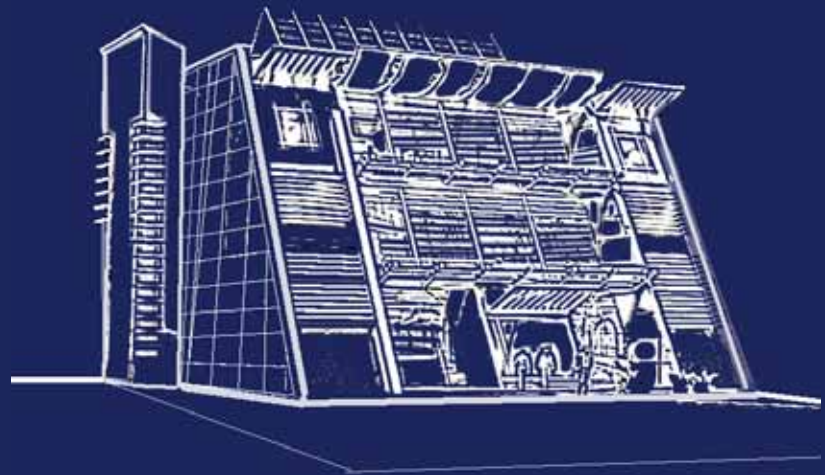


## Educational

AIC has provided solutions that have saved costs, improved educational achievement, challenged conventional thinking and surpassed expectations. By understanding purpose, performance and future use, we bring enduring value to educational environments.

The above practice has comprised the series of several types of educational facilities projects in GCC region starting from all stages of primary and secondary schools, colleagues, universities, even specialized training institutes such as the Petroleum institute, ADNOC Distribution Training Centre and ZADCO MD Training Centre, all included several types of class rooms, workshop, practical training ground and simulators for heavy equipment and machinery.

Also we designed and supervised the construction of several educational facilities, such as administration and accommodation buildings.





# ZADCO Training Center, Zirku Island, UAE

Description:

The project is a training centre with multi-story building shall consists of workshops and amenities with all external utilities like roads, sewers, potable water, utility air, car parks, power and safety requirements.

Client:	ZADCO
Location:	Zirku Island, Abu Dhabi, UAE
Function:	Education
Service:	Design
Area:	3,009 m <sup>2</sup>



# Baynounah Institute of Science & Technology, UAE

Description:

The facility in the Western Region Abu Dhabi provides a hands-on industry driven approach using the latest equipment in it's well-equipped laboratories and workshops. Guided by local industry needs tailoring coursed and training programmes to meet the needs of the local industries and support Emiratization.

Client:	ADVENTI
Location:	Abu Dhabi, UAE
Function:	Education
Service:	Design & Supervision
Area:	1,600 m <sup>2</sup>



## RAK School in Hamrania, UAE

### Description:

New School in Hamrania, Ras Al Khaimah with an approximate area of 11,500 m<sup>2</sup>.

Client:	ADEC
Location:	Ras Al Khaimah, UAE
Function:	Education
Service:	Design & Supervision
Area:	11,500 m <sup>2</sup>





# Abu Dhabi Future School – MBZ School, UAE

**Description:**

Design and build school of Design Model 1 with KG - Cycle 1 for 1000 students + 240 KG students. The Basic School Models are of two and three levels (GF+1 for Model 1 and GF1+2 for Model M4) and range in built up area. The building levels are communicated by means of elevators and staircases. The Schools' classrooms are supported by Offices, Halls, Gymnasiums, Cafeterias, Toilets, and other facilities, in addition to outdoor spaces, playgrounds, landscaping, roads and parking.

Client:	Al Mezin General Contracting
Location:	Abu Dhabi, UAE
Function:	Education
Service:	Design
Area:	12,836 m²



# Al Salam School, UAE

Description:

The Al Salam School in Abu Dhabi is a Cycle One facility designed to cater for children in Grades 1 to 5. Its overall aim is to provide a rich learning environment to inspire this age group as they begin their educational journey. The facility with a size of 20,000 m<sup>2</sup> includes class room areas, recreational facilities, administration offices and meeting areas.

Client:	ADEC
Location:	Abu Dhabi, UAE
Function:	Education
Service:	Design & Supervision
Area:	20,000 m <sup>2</sup>



# Schools Western Region, UAE

Description:

AIC conducted the Design and Supervision for a number of schools in the Western Region for the Abu Dhabi Education Council. The schools were designed in line with ADEC's vision of developing educational institutions in the Emirate of Abu Dhabi whilst implementing innovative educational policies, plans and programs that aim to improve education, and support educational institutions and staff to achieve the objectives of national development in accordance with the highest international standards.

Client: ADEC  
Location: Western Region, UAE  
Function: Education  
Service: Design & Supervision





## Al Marfa'a School, UAE

### Description:

Al Marfa'a School is located in the beautiful seaside city, Al Marfa'a, in the Western Region, 170 km from Abu Dhabi. The school is cycle one with 768 enrolled students, both boys and girls. The school buildings feature excellent facilities including a well equipped Learning Resource Centre (LRC), an auditorium, a gymnasium and a swimming pool. The school was selected to be involved in the iClass pilot project in 2011 and has continued to use ICT in a range of innovative ways with the students.

Client:	ADEC
Location:	WR, Abu Dhabi, UAE
Function:	Education
Service:	Design & Supervision
Area:	15,000 m <sup>2</sup>



# H.H Shk. Zayed International Academy, UAE

Description:

Located in Abu Dhabi this confidential Private Palace project is to be built on a 20,000 m<sup>2</sup> plot size. Designed in a traditional Arabic style but featuring modern amenities, the area includes a main Majlis and Dining Hall, a small Majlis with catering and kitchen facilities, a VIP Suite and VIP Rooms as well as all the standard facilities and amenities you would expect from such a grand structure. This project was completed in collaboration with ArchTAG.

Client:	Confidential
Location:	Abu Dhabi, UAE
Function:	Residential
Service:	Design Competition
Area:	B.U.A. - 2,500 m <sup>2</sup> Plot - 20,000 m <sup>2</sup>



ICS School, UAE



ADNOC Technical Institute , UAE



Taibah University, KSA

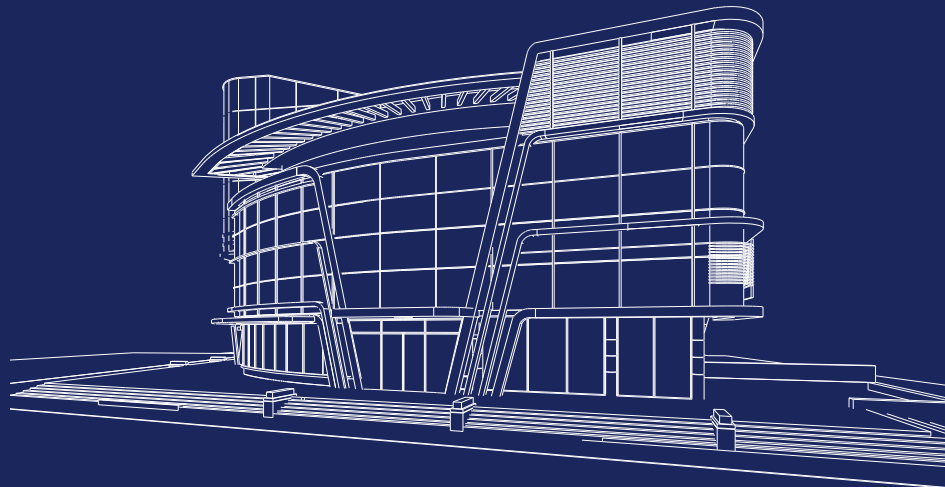




## Industrial

The industrial sector is an area where AIC's expertise can influence not only the performance of an industrial facility, but also the performance of the operation the new building is intended to support, helping our clients to successfully meet their own commercial targets.

Working closely alongside our clients, we develop bespoke industrial processing buildings that respond to specific operational needs. We factor in local legislative, geographical and environmental factors as we design sustainable, flexible and cost efficient buildings that can be built and commissioned speedily.



# Al Hosn Shah Gas – Non Processing Buildings, UAE

**Description:**

The Shah Gas Non Processing Buildings project is part of a larger expansion program within the Shah Gas Development (SGD) Project under EPC Package 10 contract. The plant is located in the Shah Field approximately 100km south of the existing GASCO Habshan facility.

All the buildings were designed as Blast Resilient structures with high quality detailed architectural and engineering form, function and finishes complying with GASCO Design General Specification (DGS).

The project was prepared to achieve the SILVER grade ratings certification for LEED (under US Green Building Council).

Client:	Abu Dhabi Gas Development Company Limited (SHAH-GAS)
Location:	Abu Dhabi, UAE
Function:	Industrial Facilities (Oil & Gas)
Service:	Architecture
Area:	41,460 m <sup>2</sup>





## Maintenance & Inspection Zone, UAE

### Description:

The Maintenance and Inspection Zone in Al Ain is an area of 2200 m<sup>2</sup>. Within the complex is an extended registration area, a prayer hall and a vehicle inspection centre. AIC's involvement in a design and supervision role completed the extension to the main registration building and renovation of the inspection area.

Client: Emirates Transport

Location: Al Ain, UAE

Function: Industrial

Service: Design & Supervision

Area: 2,200 m<sup>2</sup>

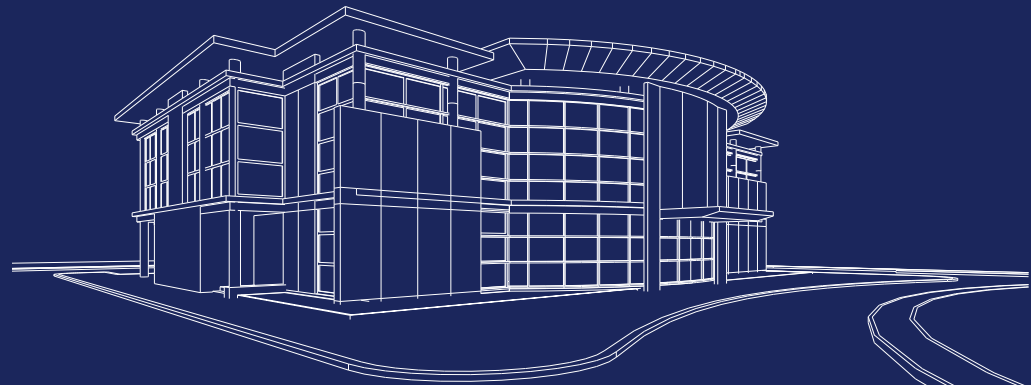






## Food Industry

AIC have excelled in the design and supervision of food industry projects across the region. Currently 8 project complexes have been constructed in Al Wathba, Baniyas, Khurfakah, Shahama, Al Ruwais, Zaid City, Mifa'a and Gayathy. There are also currently a further 9 projects under design and concept stages in the UAE, Qatar, Oman and Saudi Arabia. Our understanding of state of the art technologies and modern infrastructure and utilities make us the consultant of choice.



## Al Wathba Complex, UAE

### Description:

The Al Wathba Complex includes a slaughter house with a capacity of 1,500 sheep, 50 camels and 50 cattle per day. Within the site is a Livestock market and office and administration buildings.

Client: Abu Dhabi Municipality

Location: Abu Dhabi, UAE

Function: Food Industry

Service: Design & Supervision

Area: 15,000 m<sup>2</sup>

FOOD INDUSTRY



## Shahama Slaughterhouse, UAE

### Description:

The project is about adding a structure to the existing facilities which include slaughtering halls and associated works. The capacity of the required Slaughterhouse shall be 150 sheep/goat per hour, and 10 cows/camels per hour. Convert the existing slaughterhouse facility to shops.

Client:	Abu Dhabi Municipality
Location:	Shahama –Abu Dhabi, UAE
Function:	Food Industry
Service:	Design & Supervision
Area:	7,200 m <sup>2</sup>





# WR Slaughterhouse Complex, UAE

Description:

Located in 3 Cities in WR Region (Madinat Zayed - Ghayathi - Al Marfa'a) The Slaughter House Complexes contain Slaughterhouse Buildings, Admin Building, Veterinary Facilities, Masjid, Staff Accommodation and Facilities and a Meat and Fruit Vegetable Market. The modern facility has the capacity to service 2000 Sheep, 200 Cows and 20 Camels per day.

Client:	Western Region Municipality
Location:	3 Cities - Western Region, UAE
Function:	Food Industry
Service:	Design, Supervision, Master Plan
Area:	B.U.A - 2,800 m²



# Slaughterhouse Complex, UAE

## Description:

The Slaughterhouse complexes are planned to be in 4 locations in Al Ain, Al Foa'a, Ain Alfaydha and in Salamat. Each will contain a main slaughterhouse capable of a capacity of 500 sheep, 30 camels and 20 cattle per day. In addition to the slaughterhouse the site will include a mosque, substation and staff accommodation.

Client: Al Ain Municipality

Location: Al Ain, UAE

Function: Food Industry

Service: Design & Supervision





# Central Slaughter Complex, OMAN

## Description:

The Central Slaughter House Complex in Oman is one the biggest in the region. The 16,000 m<sup>2</sup> area includes, Sheep and Camel Pens: 3915 m<sup>2</sup>, Staff Accommodation: 3285 m<sup>2</sup>, an Administration Building: 1720 m<sup>2</sup>, Cafeteria Building: 245 m<sup>2</sup>, Examination Building: 3285 m<sup>2</sup>, and the main Slaughter Building 2000 m<sup>2</sup>.

Client: Muscat Municipality

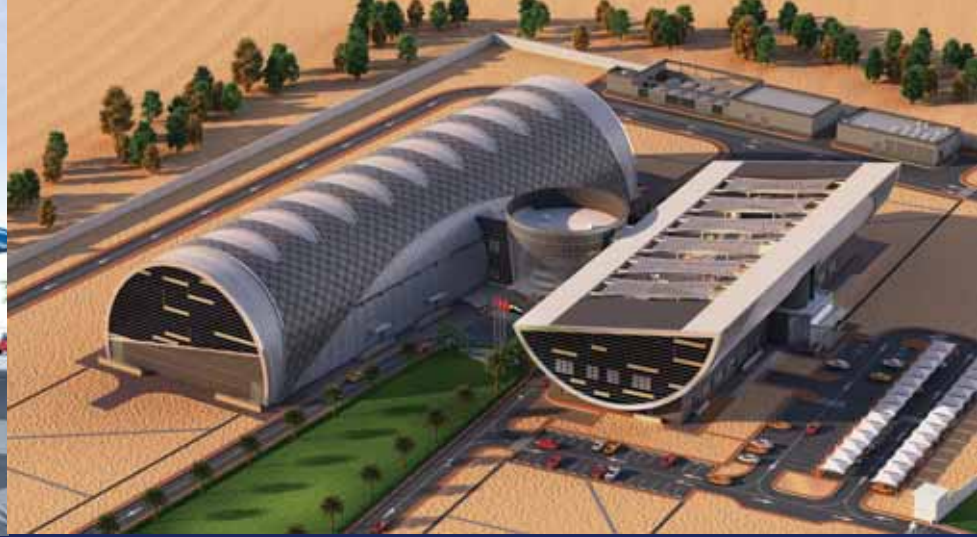
Location: Muscat, Oman

Function: Food Industry

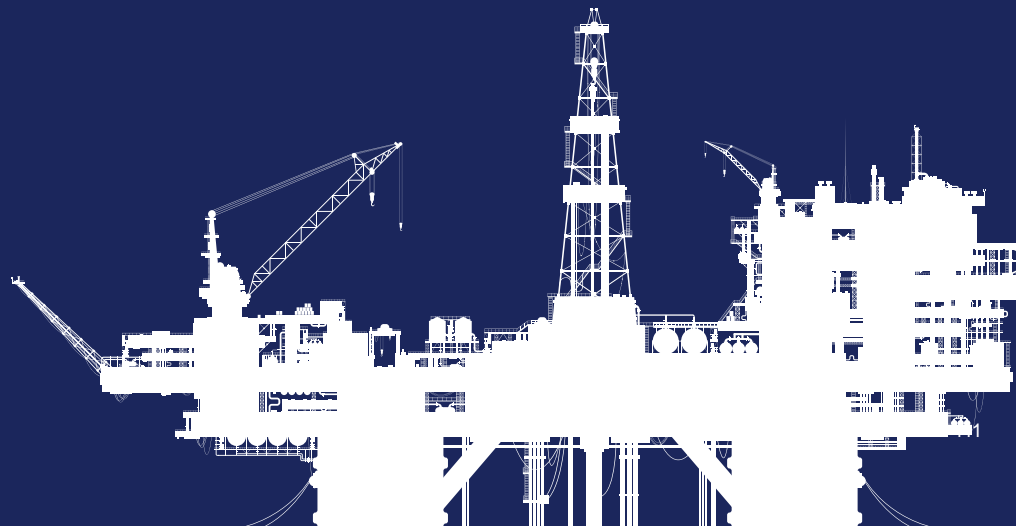
Service: Design & Supervision, PMC







## Oil & Gas



# ADNOC Vehicle Inspection Centres, UAE

**Description:**

The design as prepared and completed by AIC was used as a prototype design that reflect the ADNOC Distribution retail identity for the other new sites. The New Vehicle Registration Building comprises of, Police Officer's Offices, Meeting Rooms, Male Customer Hall with service counters for 14 staff, Female Customer halls and Sight Examination Rooms. The New Vehicle Inspection Centre comprised of, Vehicle Inspection lanes, Customer Hall, Offices for Police Officers and ADNOC Staff, Kiosk for the Cashiers, Car Repair, Offices for Insurance companies and a Cafeteria.

The project was design to achieve the required Estidama 2-star Pearl rating in compliance to all the requirements as set forth by the Abu Dhabi Municipality Urban Planning Council (UPC).

- Client: ADNOC Distribution
- Location: Various Locations, UAE
- Function: Government
- Service: Design and Supevision
- Area: 2,900 m² (per site)



# ADNOC Service Filling Stations, UAE

Description:

ADNOC Distribution entrusted AIC as the main design consultant to carry out the design and preparation of complete engineering design documents for the purpose of constructing various types of its Filling Stations facilities at 125 locations in UAE.

The design of the Filling Stations are generally consistent as a prototype basis to reflect ADNOC Distributions retail identity.

Client:	ADNOC Distribution
Location:	125 Locations, in UAE
Function:	Fuel Services Station
Service:	Design and Supervision
Area:	3,000 m <sup>2</sup> - 60,000 m <sup>2</sup>





## SASCO Petrol Station, KSA

### Description:

Sasco Petrol station offering a simple and convenient fuelling experience, the stations aims to reduce traffic at existing service stations.

Client: SASCO

Location: KSA

Function: Fuel petrol station

Service: Design Services (Architectural, Structural, Infra-Structure, MEP, QS)

Area: 600 - 800 m<sup>2</sup>



## ADNOC Linear Petrol Station (ADNOC Xpress)

### Description:

ADNOC Xpress – a new type of station offering a simple and convenient fuelling-only experience, the new stations aim to reduce traffic at existing service stations while ensuring maximum flexibility for customers.

Client: ADNOC Distribution

Location: 12 locations in Abu Dhabi

Function: Fuel petrol station

Service: Design Services (Architectural, Structural, Infra-Structure, MEP, QS)

Area: 600 - 800 m<sup>2</sup>

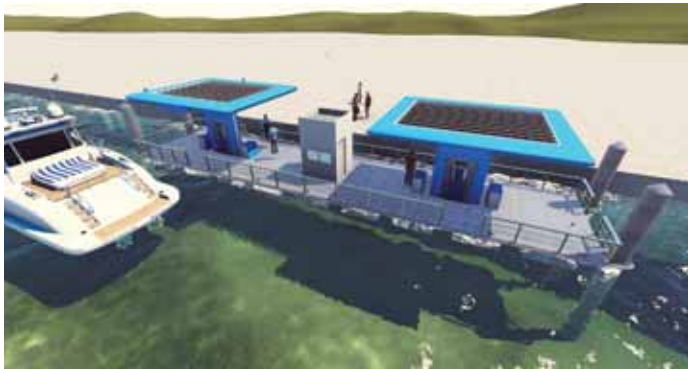


# ADNOC Marine Service Station

**Description:**

New range of service stations that offers both marine and inland services, marine service station features a wide range of modern facilities to ensure convenience and quality services to boat owners and motorists, including an ADNOC Oasis convenience store and a number of shops for lease.

Client:	ADNOC Distribution
Location:	8 locations in Abu Dhabi
Function:	Fuel Marine Service Station
Service:	Design Services (Architectural, Structural, Infra-Structure, MEP, QS)
Area:	750 - 800 m²

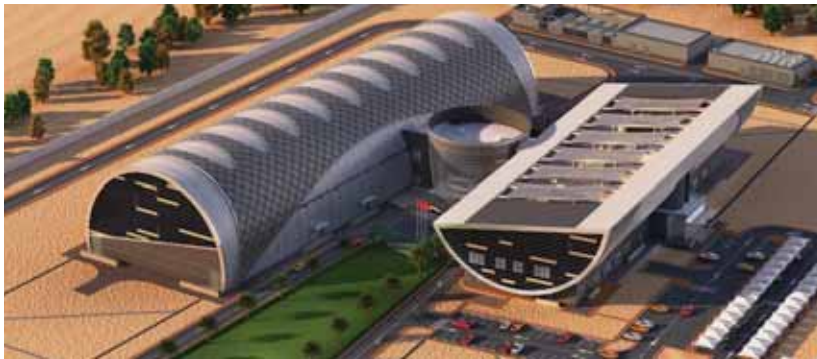




# Abu Dhabi National Library and Laboratory ADNCLL

## Description:

ADNCLL is a first of its kind project in the region and is aimed to be a state of the art property in terms of design, equipment and operational procedures. The main purpose of this project is to act as the sole centralized entity responsible for storage and testing of Core Samples that are brought from fields across UAE, therefore it is targeted to cater for the current demand and continue to be efficient for at least five decades.



Client: Abu Dhabi Company for Onshore Petroleum Operations Ltd. (ADCO)

Location: Al Shamkha City, Sector 19, Plot no. P1,  
Address 102-025-000-P1, Abu Dhabi

Function: The main purpose of this project is to act as the sole centralized entity responsible for storage and testing of Core Samples that are brought from fields across the country, therefore it is targeted to cater for the current demand and continue to be efficient for at least five decades.

Service: Design Consultancy Service

Area: 24,001.65 m<sup>2</sup>





## Sustainability and Environmental

AIC is extremely sensitive for its role in building an environment which instead of depleting the earth resources to the one that balances with nature. We start from within, and our staff are highly sensitive to every thought they put in the design process making sure not to lose sight to the consequences their decisions can make on the environment. We strive hard to provide our clients with best sustainable solution designing and delivering innovative, aesthetically inspiring and energy efficient solutions.

AIC's innovative approach to sustainable and environment consulting enables clients to achieve their sustainable business and corporate responsibility aspirations. A wealth of technical expertise at AIC enables clients to incorporate sustainability into their strategies, projects and operation.





# Ministry of Justice and Federal Courts, UAE

**Description:**

The Ministry of Justice and Federal Courts Complex located at Khalifa City A, Abu Dhabi is a prestigious project developed by the Emirates Real Estate Corporation for the Abu Dhabi Government. The complex comprises the Ministry of Justice, Federal Courts, a theatre for special occasions, and associated service blocks, with a combined gross floor area of approximately 43,000 sq. m. The complex is designed to be an energy efficient landmark building having achieved 28% energy savings and 35% improvement in envelope performance without compromising on project cost and aesthetics. The project design has achieved 2 Pearl Rating under the Pearl Building Rating System.

Client:	Emirates Real Estate Corporation
Location:	Khalifa City A, Abu Dhabi
Function:	Government
Service:	Estdama PBRS, Design and Construction Rating – 2 Pearls – PQP Service
Area:	43,000 m <sup>2</sup>





# Saadiyat Police Station, UAE

Description:

The Abu Dhabi Tourism Development and Investment Company (TDIC) develop a Saadiyat Police Station which is located in Saadiyat Beach District which is considered as a spectrum of hotel and resort destinations attracting visitors to support the cultural and mixed-use facilities.

Saadiyat Police Station is designed to reflects the vision of Abu Dhabi Government in its dedication to provide the best services for the citizens in addition to its strive to become among the best five governments in the world. The project designed on a plot of 12058 m<sup>2</sup> with a total built-up area of 10,400 m<sup>2</sup>. Maximum height of the building is 23 meters, which is compatible with the height restrictions of the area. The project is divided into three main section which consist of Main administration building, jail and accommodation.

Client:	TDIC
Location:	Saadiyat Island, Abu Dhabi
Function:	Government
Service:	Estidama PBRS, Construction Rating – 2 Pearls – PQP Service
Area:	10,400 m <sup>2</sup>



## UAE Pavilion – EXPO 2020, Dubai, UAE

### Description:

The concept by the architect Santiago Calatrava of inspired by a falcon in flight was chosen the winning design for the UAE pavilion at Expo 2020 in Dubai (UAE Pavilion). The UAE Pavilion will be built on a 15,000 sqmt site facing Al Wasl Plaza at the center of the 200-hectare exhibition zone. It will have exhibition areas, an auditorium, food and drinks outlets and special visitor lounges, and will represent the UAE to the 25 million visitors and participants from more than 180 countries who are expected to visit the Expo from October 2020 to April 2021.

Client:	WME Consultants
Location:	Dubai, UAE
Function:	Government
Service:	Waste Management Plan
Area:	15,000 m <sup>2</sup>



# Project Management Consultancy

S.NO.	NAME OF CLIENT	COMMENCEMENT AND COMPLETION DATE	SCOPE OF SERVICES	CONTRACT PRICE
1	ABU DHABI NATIONAL OIL COMPANY (ADNOC)	08TH OCTOBER 2012 08TH OCTOBER 2013	PROJECT MANAGEMENT CONSULTANCY SERVICES CONSTRUCTION MANAGEMENT	MAN-MONTH RATE (MONTHLY)
2	ZAKUM DEVELOPMENT COMPANY (ZADCO)	31ST JULY 2012 31ST JULY 2015	PROJECT MANAGEMENT CONSULTANCY (PMC) SERVICES	MAN-MONTH RATE (MONTHLY)
3	ADNOC DISTRIBUTION	10TH FEBRUARY 2010 31ST DECEMBER 2015	PROJECT MANAGEMENT CONSULTANCY SERVICES FOR CONSTRUCTION OF SERVICE STATIONS	MAN-MONTH RATE (MONTHLY)
4	PRESIDENTIAL GUARD COMMAND	22ND JANUARY 2013 22ND JANUARY 2016	CONSULTING SERVICES FOR DESIGN, SITE SUPERVISION AND PROJECT MANAGEMENT	MAN-MONTH RATE (MONTHLY)
5	ABU DHABI FOOD CONTROL AUTHORITY (ADFC)	04TH JUNE 2014 03RD JUNE 2016	PROJECT MANAGEMENT CONSULTANCY (PMC) SERVICES	MAN-MONTH RATE (MONTHLY)
6	WESTERN REGION MUNICIPALITY (WRM)	28TH MAY 2010 06TH JUNE 2011	PROJECT MANAGEMENT CONSULTANCY (PMC) SERVICES	MAN-MONTH RATE (MONTHLY)
7	ABU DHABI MUNICIPALITY	2ND OCT 2013 08TH AUGUST 2016	CONSULTANCY SERVICES AND SUPERVISION FOR SURVEYING WORKS, DEMOLITION AND LAND RECLAMATION PROJECT	MAN-MONTH RATE (MONTHLY)
8	COMMAND OF MILITARY WORKS	22ND JULY 2015	CONSULTANTS SERVICES AND SUPERVISION FOR AL HAMRA TRAINING CITY	MAN-MONTH RATE (MONTHLY)
9	ADNOC DISTRIBUTION	30TH DECEMBER 2015 30TH DECEMBER 2018	PROJECT MANAGEMENT CONSULTANCY SERVICES FOR CONSTRUCTION OF SERVICE STATIONS	MAN-MONTH RATE (MONTHLY)
10	ABU DHABI COMPANY FOR ONSHORE PETROLEUM OPERATIONS LTD (ADCO)	08TH FEBRUARY 2015 07TH AUGUST 2017	CONSTRUCTION SUPERVISION SERVICES FOR ASAB, SAHIL & BAB	MAN-MONTH RATE (MONTHLY)
11	DEPARTMENT OF TRANSPORT (DOT)	28TH JULY 2013 20TH JULY 2019	CONSULTANCY SERVICES TO PROVIDE SPECIAL SERVICES FOR DOT ON CALL BASIS	MAN-MONTH RATE (MONTHLY)
12	CRITICAL INFRASTRUCTURE & COSTAL PROTECTION AUTHORITY (CICPA)	22ND JUNE 2014 22ND JUNE 2017	PROJECT MANAGEMENT CONSULTANCY	MAN-MONTH RATE (MONTHLY)
13	MINISTRY OF PRESIDENTIAL AFFAIRS	23RD DECEMBER 2014 23RD DECEMBER 2017	PROJECT MANAGEMENT CONSULTANCY	MAN-MONTH RATE (MONTHLY)
14	UNITED ARAB EMIRATES UNIVERSITY	28TH DECEMBER 2016 27TH DECEMBER 2018	CONSULTANCY SERVICES OF TECHNICAL SUPPORT (DESIGN & SUPERVISION) FOR FACILITY MANAGEMENT DEPARTMENT	MAN-MONTH RATE (MONTHLY)
15	TAIBAH UNIVERSITY	13TH JAN 2016 13TH JULY 2018	PREPARATION OF TECHNICAL STUDIES AND DESIGNS FOR A NUMBER OF TAIBAH UNIVERSITY PROJECTS	MAN-MONTH RATE (MONTHLY)
16	ABU DHABI MUNICIPALITY	14TH OCT 2015 13TH OCT 2017	TECHNICAL SUPPORT SERVICES FOR THE INTERNAL ROADS AND INFRASTRUCTURE DIVISION	MAN-MONTH RATE (MONTHLY)
17	ABU DHABI NATIONAL OIL COMPANY (ADNOC)	3 Years	PROJECT MANAGEMENT CONSULTANCY SERVICES CONSTRUCTION MANAGEMENT (AGREEMENT NO. 11M1SCM5)	Cost Estimate: 500,000,000 AED Contract Value: Monthly
18	ZAKUM DEVELOPMENT COMPANY (ZADCO)	3 Years	ZIRKU FACILITIES NEW CONTRACTORS CAMP PROJECT MANAGEMENT CONSULTANCY (PMC) SERVICES	Cost Estimate: 245,000,000 AED Contract Value: 34,873,366 AED
19	ADNOC DISTRIBUTION	5 Years	PROJECT MANAGEMENT CONSULTANCY SERVICES FOR THE CONSTRUCTION OF FILLING STATIONS (AGREEMENT NO.: EPD10023)	Cost Estimate: 200,000,000 AED Contract Value: Monthly
20	ADNOC DISTRIBUTION	3 Years	CALL-OUT PROJECT MANAGEMENT CONSULTANCY (PMC) SERVICES FOR THE CONSTRUCTION OF SERVICE STATIONS (AGREEMENT NO.: EPD 15027A)	Cost Estimate: 150,000,000 AED Contract Value: 18,000,000 AED
21	ABU DHABI COMPANY FOR ONSHORE PETROLEUM OPERATIONS LTD (ADCO)	2 Years	CONSTRUCTION SUPERVISION SERVICES FOR ASAB, SAHIL & BAB	Cost Estimate: 800,000,000 AED Contract Value: 31,716,400 AED





## Blast Resistant (Non-Process Buildings)

# Habshan 5 – Industrial Area, UAE

Description:

GASCO aimed to build Non-process area located at Habshan 5 Area in Western region, the project contains Multi Buildings like Management Building, Restaurant and Technical Building, Laboratory Building, Masjid, Maintenance Workshop Building, Main Warehouse, Chemical / Lube oil shed, Car wash & Workshop, chiller Yard, Substations, Fire Station / Training and Main Gatehouse, Construction of this project is done.

Client:	GASCO
Location:	Habshan 5, UAE
Function:	Industrial
Service:	Design
Area:	44,6736.24 m²

BLAST RESISTANT (NON-PROCESS BUILDINGS)









# Borouge Administration Building, UAE

Description:

Borouge is a leading provider of innovative, value creating plastics solutions. A joint venture between the Abu Dhabi National Oil Company (ADNOC), one of the world's major oil and gas companies, and Austria based Borealis, a leading provider of chemical and innovative plastics solutions. The administration building at a size of 6,000 m<sup>2</sup> is a ground floor plus 1 development featuring typical office space, meeting areas and administration departments.

Client:	Borouge
Location:	Al Ruwais Industrial Area, WR, UAE
Function:	Government
Service:	Design & Supervision
Area:	6,000 m <sup>2</sup>



BLAST RESISTANT (NON-PROCESS BUILDINGS)

# Buhasa Main Plant Blast Proof Rooms, UAE

**Description:**

Abu Dhabi Gas Industries Ltd. (GASCO) intends to embark upon the construction of the "Two Modular steel blast resistant operator rooms " at BUHASA Plant, located approximately 180 km west of Abu Dhabi. And it was designed to comprise of the following facilities and requirements:

Two Operator Maintenance Shelters (OMS).

- Guard House
- Car Park

Design stages include: Pre-Conceptual, Conceptual Studies, Conceptual Design and CSA Basic Engineering for the project. Design criteria is established according to the analysis of the collected data and using the relevant international standards and codes to achieve the best options that will satisfy the end users' needs and all technical requirements.

Client:	Abu Dhabi Gas Industries Ltd. (GASCO)
Location:	BUHASA –Abu Dhabi, UAE
Function:	Shelters
Service:	Design
Area:	280 m²



# Ahmed Almazrouei Group L.L.C.

AIC is part of the Ahmed Almazrouei Group L.L.C. (AAG). The group has grown with the UAE and whilst best known for its activities in the Architecture, Engineering and Construction industries it's diverse companies now operate in sectors of real estate, retail, education and recruitment.

Currently 12 companies make up the AAG group with the number increasing year on year. Primarily focuses within the GCC market the expansion of AAG series activities now widening to the global market.

With over 30 years of experience the name of Ahmed Almazrouei Group has become synonymous with dynamic growth, evidenced by its commitment to develop and grow business in multiple sectors.

[www.almazroueigroup.ae](http://www.almazroueigroup.ae)







[altorath.ae](http://altorath.ae)